



PRODUCT CATALOG 2025

EDUCATION AND OUTDOOR ADVENTURE
FOR EVERYONE



OUTDOOR. EDUCATION. FUN.
EDU PLAYGROUND
Inclusivity is our standard

WWW.EDUPLAYGROUND.EU | OFFICE@EDUPLAYGROUND.EU | PHONE: +48 512 450 033



ABOUT US

Why is it worth working with us?

IDEA – we create playgrounds that educate through play, encourage exploration, and support brain development.

EXPERIENCE – since 2012 we have been designing and producing original, educational playgrounds. The entire production takes place in Poland.

WE ARE THE LEADER in creating scientific outdoor devices.

THOUSANDS OF CUSTOMERS HAVE ALREADY TRUSTED US – local governments, hospitals, hotels, therapeutic centers, education (schools, kindergartens, nurseries, Local Action Groups, foundations, amusement parks, educational parks, ecological education centres, forest districts and private companies.



EDU PLAYGROUND SUPPORTS:

SENSORY INTEGRATION

we stimulate all the senses

EFFECTIVE LEARNING

through engagement and stimulating curiosity – alternative education – learning outside the school walls

EQUAL EDUCATIONAL OPPORTUNITIES

thanks to us, mini-science centres are being created even in the smallest communes

FRESH AIR ACTIVITY

the devices allow you to have fun regardless of the season and weather

INCLUSIVENESS

our mission is to create places accessible to everyone, regardless of gender, age, level of ability or other limitations



WHAT DEVICES DO WE OFFER?

CERTIFIED

We design and build safe playgrounds in accordance with the PN-EN 1176-1:2017-12 standard. Additionally, all moving elements and high-value elements are secured against theft. Our devices do not require the use of safe surfaces, which reduces investment costs.

SOLID

The construction of our devices is made of steel. Unlike wood, metal exhibits are characterized by high durability and resistance to changing weather conditions. Putting importance on the highest quality, all moving elements are made of stainless steel, and the exhibits are galvanized and powder coated.

NO BARRIERS

All equipment is adapted to the needs of disabled people. Thanks to this, no child will be excluded from outdoor play.

EASY TO USE

All products are designed for independent learning about the laws of nature and science, without a teacher's help

THEMATIC

Do you want to create an educational path of illusion? Or maybe you are interested in a physics zone, nature or sensory path? With us it will be possible! Our advisors support you at every stage – from the idea and financing to installation at the chosen location. Throughout the country and abroad.

INNOVATIVE

We are distinguished by design and original and innovative projects. We put maximum creativity and commitment into each implementation. Our goal is to meet the unique needs of both clients and end users of playgrounds





SWING AND SANDBOX

*– does this make the
investment unique?*

Since the 1970s, playgrounds have looked the same – with swings, sandboxes, and slides. It's time for a change. Edu Playgrounds are the future of learning and a modern alternative to traditional play areas. They bring a new way of thinking about parks, public spaces, and indoor areas. Our innovative equipment makes playgrounds interesting for the whole family – for children and adults alike.

We believe that play can be both fun and educational.

Year-round fun for the whole family!

Many traditional playgrounds are hard to use in rain or snow – slides and sandboxes often stay empty. Our equipment works in any weather. Children can play instruments, experiment, or use the outdoor eco-kitchen even in winter.

This means year-round activity, learning, and joy – no matter the season.

LIST OF DEVICES

SCIENTIFIC

<u>TELESCOPE L01, L02</u>	8
<u>GLOBE G90</u>	12
<u>ANIMATED MOVIE N03</u>	14
<u>CHINESE WHISPERS N04</u>	20
<u>NEWTON'S CRADLE N05</u>	24
<u>COMPASS N06</u>	26
<u>PERISCOPE N07</u>	28
<u>SUNDIAL N14</u>	30
<u>PERIODIC TABLE N18</u>	32

ILLUSIONS

<u>WHOSE FACE IS THIS I02</u>	34
<u>OPTICAL WHEEL I03</u>	36
<u>DISTORTING MIRRORS I05</u>	42
<u>SCIENTIFIC HEX I06</u>	44
<u>MIRROR WRITING I07</u>	46
<u>KALEIDOSCOPE I08</u>	50

SENSORY

<u>ECO-KITCHEN S01</u>	52
<u>EU-GENIUS KITCHEN KE01</u>	54
<u>EU-GENIUS WORKSHOP WE01</u>	58
<u>MEMORY GAME S02</u>	62
<u>MAGNETIC MARBLE RACE TRACK</u>	70
<u>PAINTING WALL S06</u>	74
<u>EDUCATIONAL BOARDS (STANDARD) EB</u>	76
<u>EDUCATIONAL BOARDS (WITH ROTATING ELEMENTS)</u>	86
<u>PYTHAGORAS EDUCATIONAL BOARD S09</u>	94
<u>DA VINCI EDUCATIONAL BOARD S10</u>	96
<u>PICASSO EDUCATIONAL BOARD S11</u>	98
<u>EDU-BOXES</u>	100





WTOREK
ŚRODA
CZWARTEK
PIĄTEK
SOBOTA
NIEDZIELA

1 DZIEŃ = 24 GODZINY
1 MINUTA = 60 SEKUND
1 GODZINA = 60 MINUT

Wiosna - 20 marca do 21 czerwca
Lato - 21 czerwca do 23 września
Jesień - 23 września do 20 grudnia
Zima - 20 grudnia do 19 marca

Letnie igrzyska Olimpijskie
Zorganizowane zostały w 1900 roku w Paryżu. Wtedy to po raz pierwszy w historii igrzysk olimpijskich wzięli udział również sportowcy z innych państw niż Grecja.

Kto go grał?
Zorganizowane zostały w 1900 roku w Paryżu. Wtedy to po raz pierwszy w historii igrzysk olimpijskich wzięli udział również sportowcy z innych państw niż Grecja.





TELESCOPE

WHY CHOOSE THE TELESCOPE?

Certified filters and durable construction ensure safe use.

Designed by an expert with 40 years of experience, using high-quality materials.

Ideal for schools, educational centers, and individual enthusiasts.

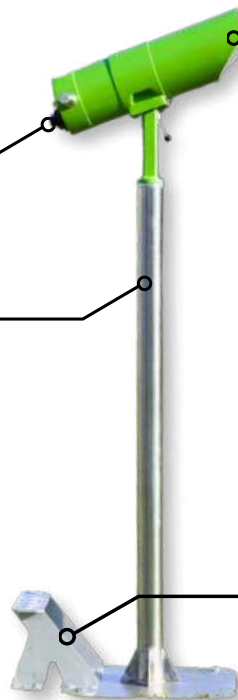
L01 SINGLE TELESCOPE

L02 DOUBLE TELESCOPE

The eyepiece is responsible for magnifying the image and adapting it to our eye.

Professional lenses made of high-quality optical materials

Possibility to choose a double-scope version



Footrest for easy observation



LANDSCAPE TELESCOPE 25X100 MM

- Powerful magnification: 25x increases the ability to observe distant objects – from several hundred meters to infinity.
- Large professional lens diameter: 100 mm guarantees bright and clear images even in low light conditions
- Solid construction and stable mounting: guarantee durability and comfort of use.

ASTRONOMICAL TELESCOPE 45X90 MM

- Professional lenses provide clear images of the night sky.
- The telescope allows you to observe the planets of the Solar System, including Jupiter with its moons, Saturn with its rings, as well as nebulae and details of the Moon.
- Stable Construction: Precise focusing system and solid mount.

TURN YOUR ASTRONOMICAL TELESCOPE INTO A SOLAR TELESCOPE - ADD SOLAR FILTER



SELECT YOUR CONFIGURATION



3-IN-1 TELESCOPE – EXPLORE MORE

This multifunctional telescope offers three exciting observation modes in one compact design:

- **Landscape Mode** – for observing nature, distant objects, and surroundings during the day.
- **Astronomical Mode** – for stargazing and exploring the night sky: planets, the Moon, and stars.
- **Solar Mode (only with the solar filter)** – simply add a dedicated solar filter to the astronomical telescope to safely observe the Sun, including sunspots and solar activity.

Switching between modes is quick and easy. This makes the telescope perfect for educational environments, science parks, and outdoor learning spaces.

With just one product, users can experience Earth, space, and our star – the Sun – all in a safe, engaging, and hands-on way.

SINGLE VARIANTS:

- **L01-W** - single landscape telescope
- **L01-A** - single astronomical telescope

DOUBLE VARIANTS

- **L02-W** - double landscape telescope
- **L02-A** - double astronomical telescope
- **L02-AW** - landscape + astronomical telescope
- **LFS** - solar filter for the astronomical telescope

DIMENSIONS

single: 58 cm x 58 cm
double: 58 cm x 98 cm

HEIGHT

astronomical 185 cm,
landscape telescope 157.2 cm

MATERIAL

the construction is made of cast aluminum

COLOR STANDARD

green (RAL 6018)

PRODUCT COMPLIES WITH PN-EN: 1176-

1:2017

YES

RECOMMENDED INSTALLATION

closed area/open area

SAFEGUARD

galvanized construction, powder coated

CATEGORY

KINDERGARTENS, SCHOOLS, HORECA, MEDI

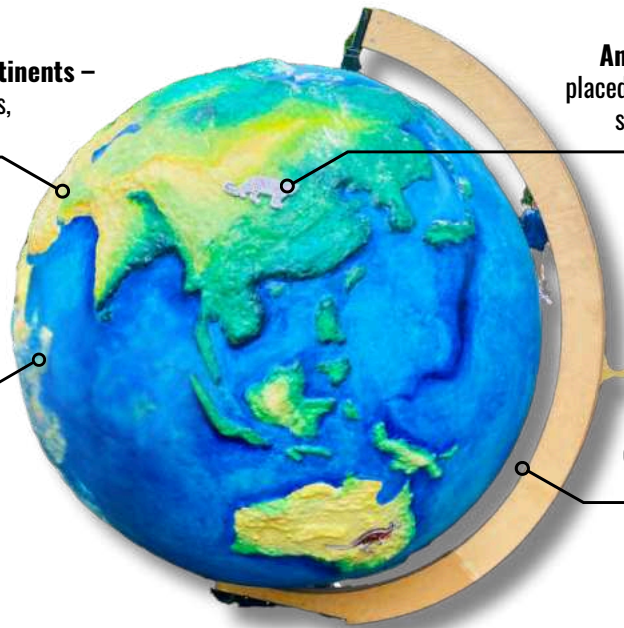
G90 GLOBE

Realistic representation of continents – the convex terrain shows mountains, lowlands and water reservoirs

Sensory support – bumps and textures allow for learning through touch

Animal models – figures placed on the globe represent species characteristic of individual areas

Rotating design – allows children to interactively explore different parts of the world



HOW DOES IT WORK?

The rotating globe presents continents in a realistic way.

Raised surfaces show landforms such as mountains, lowlands, and water areas. Bright colors help children learn geography. Animal figures placed on the globe show which species live in different parts of the world.

The globe supports spatial thinking and helps understand how different regions of the world are connected.

It is perfect for educational and nature-related spaces, such as:

- **zoos,**
- **botanical gardens,**
- **nature education centers and many others.**

DIMENSIONS
diameter 90 cm

HEIGHT
121.5 cm

SAFETY ZONE
2.4 x 2.4 m

COLOR STANDARD
GREEN (RAL 6018)

PRODUCT COMPLIES WITH PN-EN: 1176-1:2017
YES

RECOMMENDED INSTALLATION
closed area/open area

SAFEGUARD
galvanized construction, powder coated

CATEGORY
KINDERGARTENS, SCHOOLS, HORECA, MEDI





N03

N03-1 SINGLE
N03-2 DOUBLE

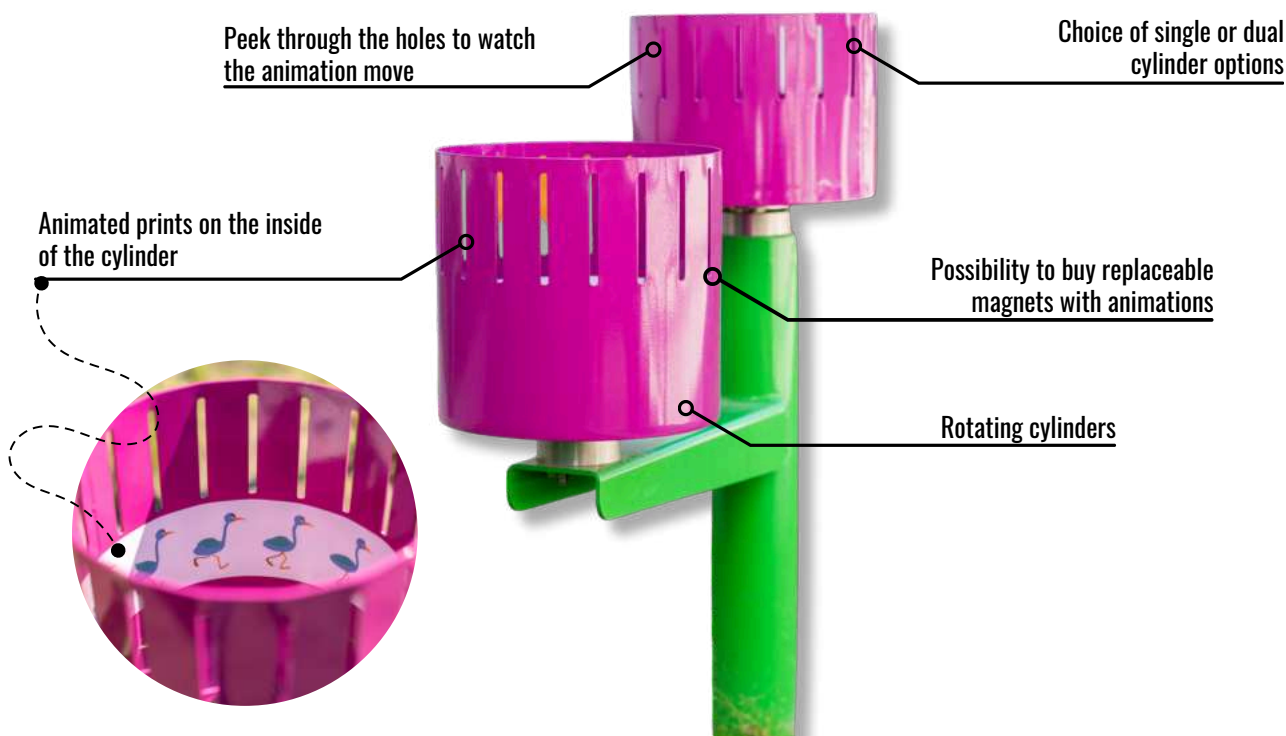
ANIMATED MOVIE



N03 ANIMATED MOVIE

N03-1 SINGLE ANIMATED MOVIE

N03-2 DOUBLE ANIMATED MOVIE



HOW DOES IT WORK?

Operating the device is simple — just spin the cylinder and look through the holes at the images inside. Their quick succession, with small differences between each frame, produces the effect of motion. This is the basic principle behind stop-motion animation.

BASE + REPLACEABLE MAGNETS

N03-1: The one-cylinder version features a permanent frog animation.

N03-2: The two-cylinder version includes both horse and frog animations.

For more options, weatherproof magnets with 8 designs plus a blank one are available to easily swap animations inside the cylinder.

More patterns are available.



DIMENSIONS

N03-1 single cylinder: 30 cm
N03-2 double - two cylinders: 77 x 30 cm

HEIGHT

N03-1: 101.5 cm
N03-2: 116 cm

MATERIAL

Steel construction. Main structural profile: black steel, 108 mm diameter pipe, prints made on self-adhesive foil secured with UV-resistant laminate

COLOR STANDARD
 green (RAL 6018)

SAFETY ZONE

N03-1: 3.3 x 3.77 m
N03-2: 3.3 x 3.77 m

PRODUCT COMPLIES WITH PN-EN:
1176-1:2017
 YES

RECOMMENDED INSTALLATION
 closed area/open area

SAFEGUARD
 galvanized construction, powder coated

CATEGORY
 KINDERGARTENS, SCHOOLS, HORECA, MEDI



AVAILABLE MAGNET DESIGNS

A1: FROG



A2: HORSE



A3: FACTORY



**A4: BASKETBALL
PLAYER**



A5: BLACK BIRD



A6: BIRD COLOR



A7: PLANT



A8: FLOAT



MAKE YOUR OWN ANIMATION

Thanks to the blank magnet, children can draw their own patterns using dry-erase markers. Draw your design, place the magnet inside the cylinder, and when you spin it, the drawings will come to life like a movie. The frames of the animation are a series of drawings that appear to move when rotated. This reusable magnet allows for endless creativity and can be customized again and again.





PERSONALIZATION OF PATTERNS

Choose from three print personalization options to create an animated film tailored to your style. Each option features durable, visually appealing prints designed to withstand everyday use—even in the toughest weather conditions.



HOW PERSONALIZATION WORKS (3 OPTIONS)

1 BASIC OPTION

Please send your completed project as graphic files in the correct format and file extension.

2 STANDARD OPTION

Your project submission should include photos, graphics, and edited content.

We provide up to two rounds of corrections.

3 PREMIUM OPTION

The complete project is carried out by our graphic designer. Pricing varies based on project complexity.

OUTDOOR EDUCATION



EDUCATIONAL TOOL

The device explains in a simple way the old rules of creating animated films. It supports creativity, engages and inspires to create your own animations. It encourages to spend time outdoors.

N04

CHINESE WHISPERS



N04 CHINESE WHISPERS

N04-S SMALL SIZE

N04-L LARGE SIZE

N04-M MIX SIZE

Steel acoustic tubes – made of durable material, ensure effective sound transmission

Sound funnels – wide ends amplify and direct the sound

Underground PE pipes – hidden sound transmission system connecting both tubes

HOW DOES IT WORK?

Simply have two people stand at opposite ends with the tubes. The game is about whispering messages to each other. The tubes guide the sound waves directly to the ears, making quiet voices clearly heard. Even soft whispers travel clearly through the tube, surprising children and encouraging them to keep playing. This simple setup turns into a fascinating experience that shows how sound moves through space.

WHAT IS SPECIAL ABOUT CHINESE WHISPERS?

- Children can see how sound travels.
- The game improves listening and focus.
- It's a fun group activity that builds friendships and helps kids connect with others.
- It also sparks imagination as children invent their own messages and stories.

DIMENSIONS

SMALL 65 x 30 cm

LARGE 80 x 37 cm;

MIX Two pieces—one of each size

HEIGHT

large 180 cm;

MINI 146 cm

MATERIAL

steel structure. Main structural profile: black steel, pipe diameter 108 mm

SAFETY ZONE

diameter 3 m for each tube

COLOR STANDARD

purple (RAL 4006).

PRODUCT COMPLIES WITH PN-EN: 1176-1:2017

YES

RECOMMENDED INSTALLATION
closed area/open area

SAFEGUARD

galvanized construction, powder coated

CATEGORY

KINDERGARTENS, SCHOOLS, HORECA, MEDIA





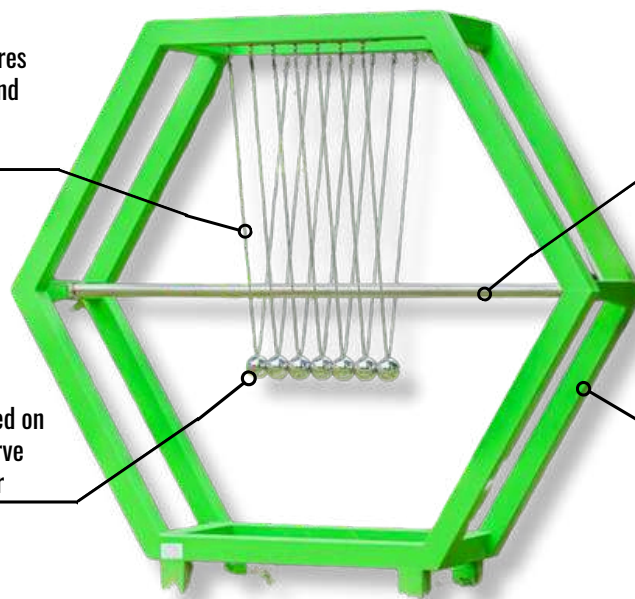
N05 NEWTON'S CRADLE

Suspension system – ensures free movement of the balls and precise operation of the mechanism

Cross guide tube – keeps the balls in the right position and stabilizes the structure

Pendulum balls – suspended on thin ropes, allow you to observe collisions and energy transfer

Steel construction – stable, resistant to weather conditions, ensuring the durability of the device



HOW DOES IT WORK?

Deflect the ball at the edge and let it go gently.

It will hit the other balls. Then, the same number of balls will swing out on the other side. You can try with more balls to see what happens. Be careful with your fingers! You have just seen the rule of conservation of energy and momentum in action.

WHAT IS SPECIAL ABOUT NEWTON'S CRADLE?

- Newton's cradle helps children understand how energy and movement are passed from one object to another.
- It shows important ideas in physics in a simple and fun way.
- Children learn to observe closely, notice small changes, and think about what they see.
- It's also a great activity for building focus and attention.

DIMENSIONS

196 x 55 cm

HEIGHT

185 cm

MATERIAL

Steel structure, stainless steel balls, stainless steel cables. Main structural profile: black steel, closed profile 80x80=2

SAFETY ZONE

3,55 x 4,96 m

COLOR STANDARD

Green (RAL6018)

PRODUCT COMPLIES WITH PN-EN: 1176-1:2017

YES

RECOMMENDED INSTALLATION

closed area/open area

SAFEGUARD

galvanized construction, powder coated

CATEGORY

KINDERGARTENS, SCHOOLS, HORECA, MEDI





N06 COMPASS

Magnetic needle - always points north thanks to the Earth's magnetic field.

Transparent dome - protects the needle and lets it move freely.

Directional scale - shows four directions (N, S, E, W) and degrees for accurate navigation.

Durable construction - weather-resistant and built to last.



HOW DOES IT WORK?

Rotate the compass slowly around its vertical axis. You will see that the needle always points north. This happens because the needle reacts to the Earth's magnetic field. A compass is a tool that shows the four main directions and helps with navigation.

WHAT IS SPECIAL ABOUT COMPASS?

- Understanding how a compass works is a great first step for future explorers.
- It helps children become curious about the world and how to move through it.
- The compass also teaches useful, hands-on skills that are being lost in today's digital world.
- Like all our devices, it's made to spark interest and inspire learning through experience.

DIMENSIONS

diameter 25 cm

HEIGHT

117 cm

MATERIAL

steel structure, compass body made of aluminum, main structural profile: black steel, pipe with a diameter of 108 mm

SAFETY ZONE

diameter 3 m

COLOR STANDARD

Green (RAL6018)

PRODUCT COMPLIES WITH PN-EN: 1176-1:2017

YES

RECOMMENDED INSTALLATION

closed area/open area

SAFEGUARD

galvanized construction, powder coated

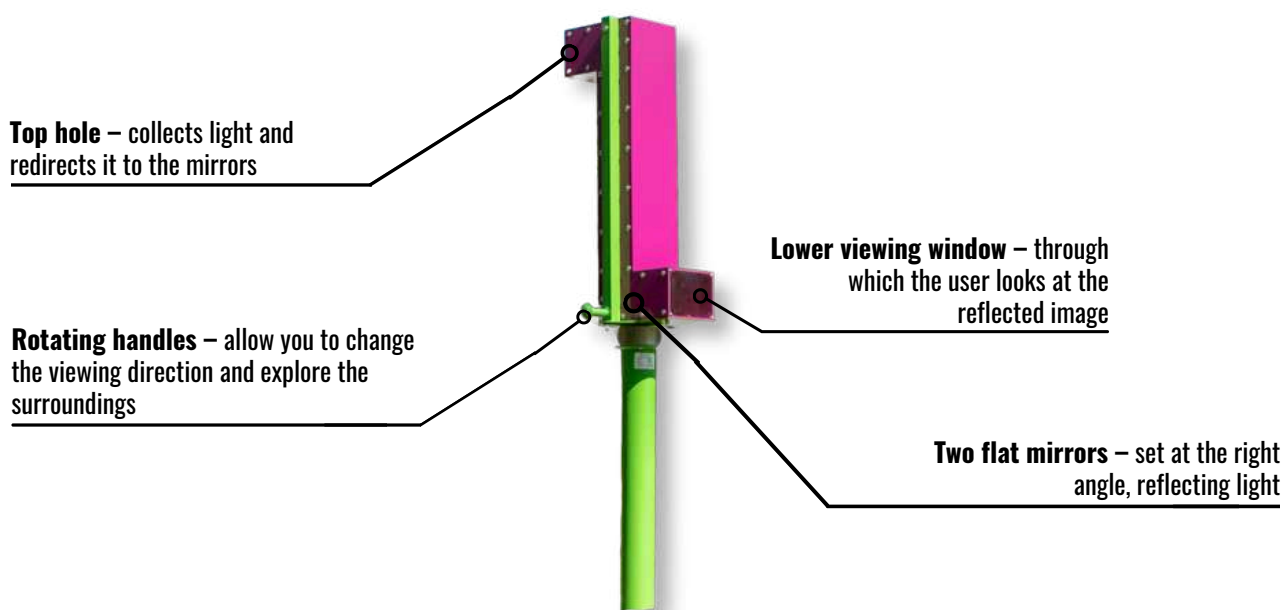
CATEGORY

KINDERGARTENS, SCHOOLS, HORECA, MEDI





N07 PERISCOPE



HOW DOES IT WORK?

The periscope is made of two flat mirrors placed at right angles.

When you look through the lower window, light reflects off the mirrors and reaches your eyes.

This lets you see objects that are above or behind obstacles, even if you're not facing them.

The image you see is formed by the path of light bouncing through the mirrors.

WHAT IS SPECIAL ABOUT PERISCOPE?

The periscope allows children to see from a new perspective — above their normal eye level. It teaches how light travels and reflects, helping children understand basic physics in a hands-on way.

It also encourages curiosity and active exploration of the surroundings.

The periscope turns simple observation into an exciting and educational game.

DIMENSIONS

46 x 42 cm

HEIGHT

213 cm

MATERIAL

steel structure, mechanical elements made of stainless steel, stainless bearings, polycarbonate visor

SAFETY ZONE

3,46 x 3,21 m

COLOR STANDARD

green (RAL 6018), purple (RAL 4006)

PRODUCT COMPLIES WITH PN-EN: 1176-1:2017

YES

RECOMMENDED INSTALLATION

closed area/open area

SAFEGUARD

galvanized construction, powder coated

CATEGORY

KINDERGARTENS, SCHOOLS, HORECA, MEDIA





N14 SUNDIAL

Clock face – made of durable stone (granite) resistant to weather conditions

Geographic directions - there are directional markings on the edges of the dial

Gnomon (hint) – a metal rod mounted at a specific angle, casting a shadow on the dial depending on the position of the sun

Hour scale - circles with marked hours, allowing you to read the current time



HOW DOES IT WORK?

Look at the shadow cast by the steel rod. If the sun is not behind the clouds, you can read the time.

At noon, the shortest shadow appears, pointing north.

Compare the sundial reading with the time on your watch.

WHAT IS SPECIAL ABOUT SUNDIAL?

- It's a great starting point for conversations about time and the natural world.
- Teachers and guardians can use it as a hands-on tool during geography or science classes.
- Learning how a sundial works can inspire children to build their own model, for example in technical or design lessons.

DIMENSIONS
diameter 60 cm

HEIGHT
75 cm

MATERIAL
Steel structure + granite clock face. Main structural profile: black steel, closed profile 120x120=3

COLOR STANDARD
green (RAL 6018)

SAFETY ZONE
diameter 3.6 m

PRODUCT COMPLIES WITH PN-EN: 1176-1:2017
YES

RECOMMENDED INSTALLATION
closed area/open area

SAFEGUARD
galvanized construction, powder coated

CATEGORY
KINDERGARTENS, SCHOOLS, HORECA, MEDI





N18 PERIODIC TABLE

Rotating cubes with elements

- each of them has a symbol, mass and atomic numbers and what is their electronegativity



QR codes - will take the user to the website www.npz.edu.pl, which shows a given element in its practical version



Braille stickers

The Periodic Table won 2nd place in the "Accessibility Leader" competition organized by the Ministry of Development and Technology

WHAT IS SPECIAL ABOUT THE PERIODIC TABLE?

- The device helps children think and compare elements, supporting learning and analysis.
- It builds focus, hand-eye coordination, and precision, which improves motor skills.
- It also allows children who are blind or visually impaired to play and learn.

QR CODES

QR codes expand how the board can be used. They take children to more information about each element. There, they can read about its history, properties, and everyday uses.

DIMENSIONS

374 x 12 cm

SAFETY ZONE

6,75 x 3,1 m

HEIGHT

178 cm

PRODUCT COMPLIES WITH PN-EN: 1176-1:2017

YES

MATERIAL

Main structural profile: black steel, plates made of dibond, printing protected with UV-resistant laminate. Open profile 90 x 60

RECOMMENDED INSTALLATION

closed area/open area

SAFEGUARD

galvanized construction, powder coated

COLOR STANDARD

green (RAL 6018)

CATEGORY

KINDERGARTENS, SCHOOLS, HORECA, MEDI



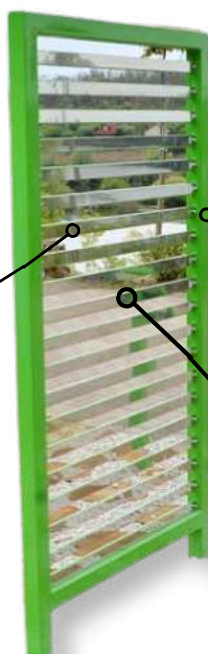


102 WHOSE FACE IS THIS

Stainless steel mirrors – strong and safe, resistant to weather, chemicals, and temperature changes. Mirrors will not break or create a danger

Steel construction – stable and durable in all conditions.

Mirrored optical strips – reflect parts of people on both sides, creating an interesting visual effect.



HOW DOES IT WORK?

When we look into the mirror, we see our own reflection, but at the same time, we try to connect it with the face of the person standing opposite us.

Our brain tries to match both images and blend them into one. This creates the illusion that we share one face or body, which is both surprising and funny. It's a simple way to explore how our perception works.

WHAT IS SPECIAL ABOUT WHOSE FACE IS THIS?

- develops observation and attention to detail,
- supports teamwork, communication, and cooperation,
- lets children experience optical illusions in a direct and playful way,
- encourages creativity and free thinking through fun experimentation.

DIMENSIONS

100 x 6 cm

HEIGHT

200 cm

MATERIAL

steel structure, mirror stainless steel, polished. Main structural profile: black steel, closed profile 60x60=2

SAFETY ZONE

4 x 3,06 m

COLOR STANDARD

green (RAL 6018)

PRODUCT COMPLIES WITH PN-EN: 1176-1:2017

YES

RECOMMENDED INSTALLATION

closed area/open area

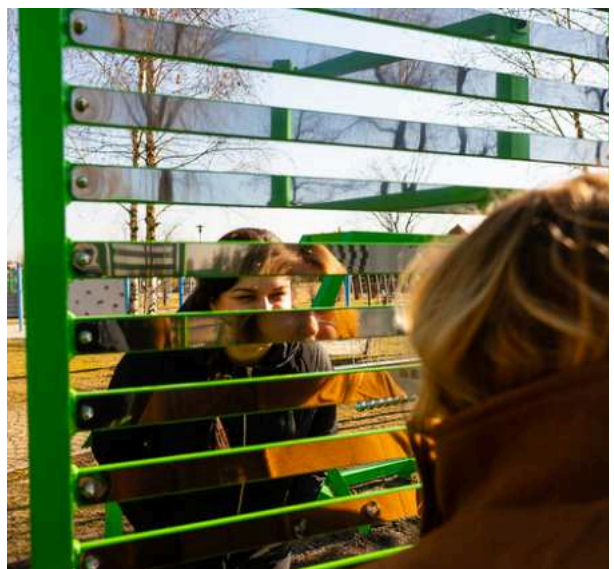
SAFEGUARD

galvanized construction, powder coated

CATEGORY

KINDERGARTENS, SCHOOLS, HORECA, MEDI

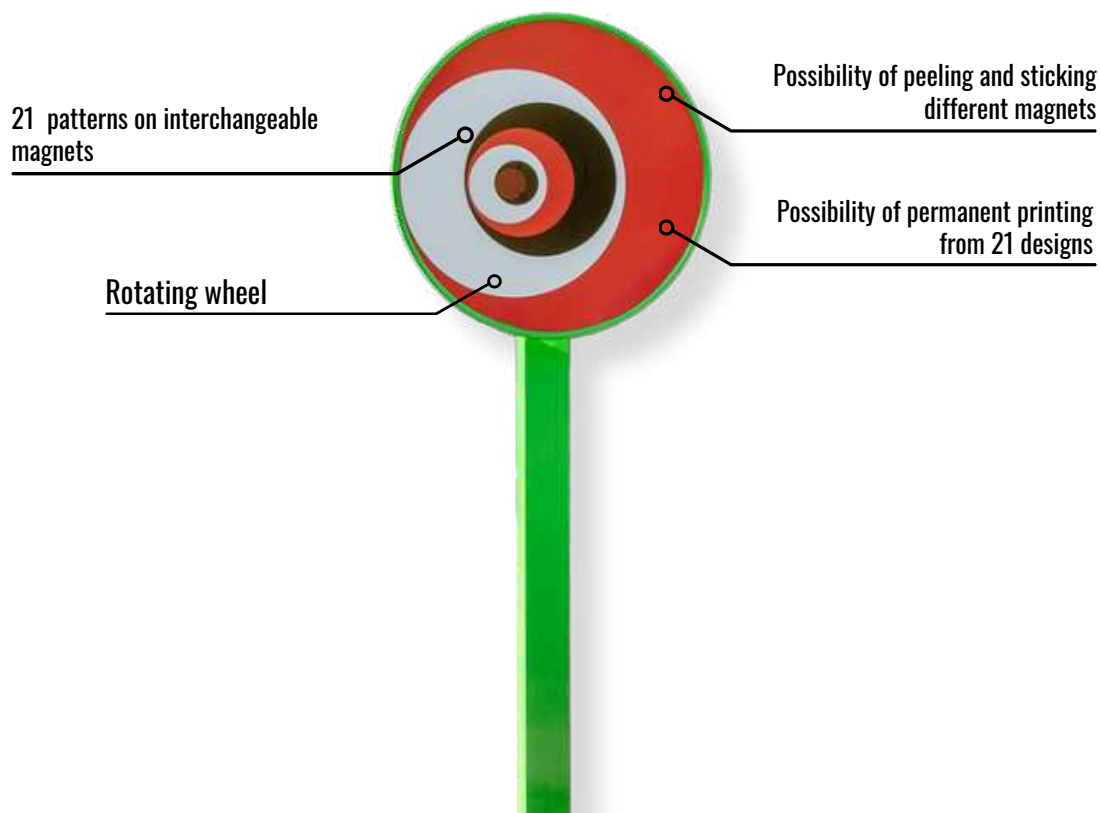




OPTICAL WHEEL



I03 OPTICAL WHEEL



HOW DOES IT WORK?

Spin the optical circle and watch how the image changes while it moves.

Your eyes and brain try to follow the patterns, even if they create illusions that aren't real.

This simple movement shows how our vision and mind work together to understand what we see.

BASE + REPLACEABLE MAGNETS

Choose from 16 optical illusion designs (plus 5 extra themes) that are permanently printed on the device.

For more variety, you can add extra magnets.

These magnets are weatherproof and easy to swap, so you can change the illusions and refresh your space anytime.

DIMENSIONS

diameter 65 cm

HEIGHT

186 cm

MATERIAL

Steel construction, print made on self-adhesive foil protected with UV-resistant laminate, mechanical elements made of stainless steel. Main structural profile: black steel, closed profile 100x100=3

COLOR STANDARD

green (RAL 6018)

SAFETY ZONE

diameter 3,7 m

PRODUCT COMPLIES WITH PN-EN: 1176-1:2017

YES

RECOMMENDED INSTALLATION

closed area/open area

SAFEGUARD

galvanized construction, powder coated

CATEGORY

KINDERGARTENS, SCHOOLS, HORECA, MEDI



AVAILABLE OPTICAL ILLUSION PATTERNS

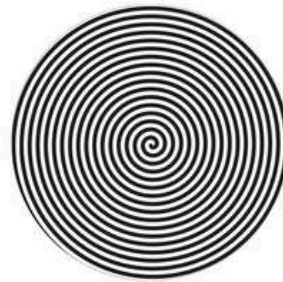
CHOOSE AND MIX AS YOU LIKE



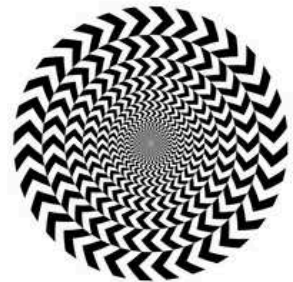
AP-1



AP-2



AP-3



AP-4



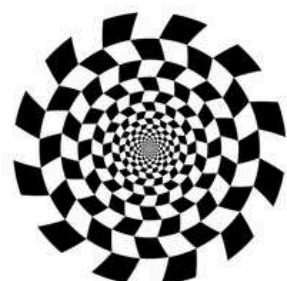
AP-5



AP-6



AP-7



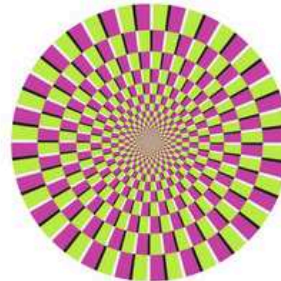
AP-8



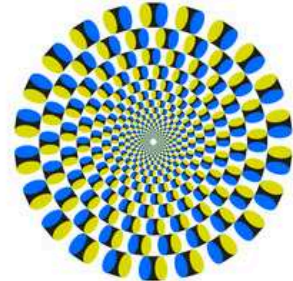
AP-9



AP-10



AP-11



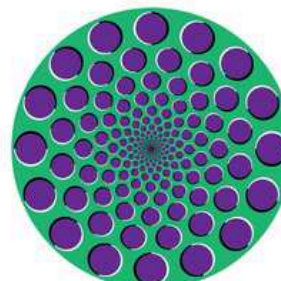
AP-12



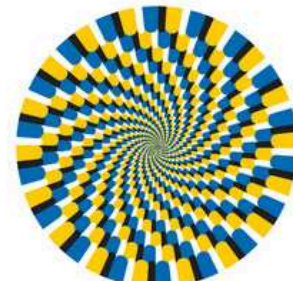
AP-13



AP-14



AP-15

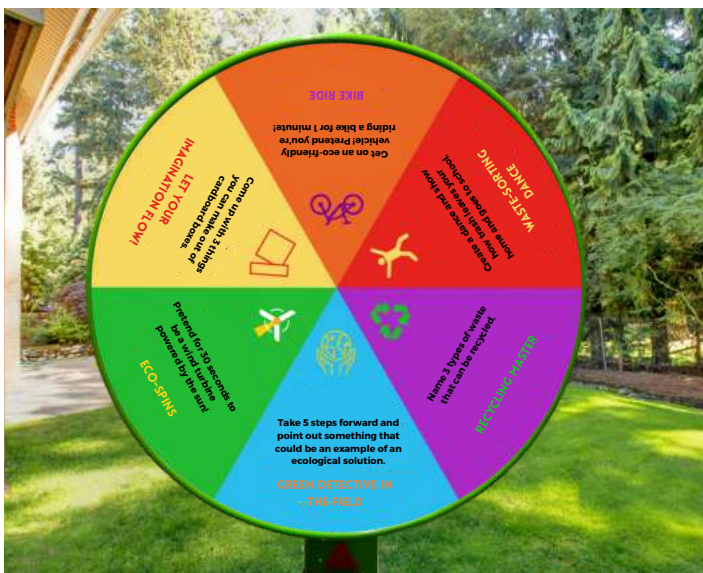


AP-16

AVAILABLE OPTICAL ILLUSION PATTERNS

AP-17 HEALTH FORTUNE

Spin the “Health Fortune” wheel and wait for it to stop. Each field shows a part of the body and an exercise related to it. When the arrow stops, read the task and do the movement. It’s a fun way to be active outdoors and learn about your body at the same time.

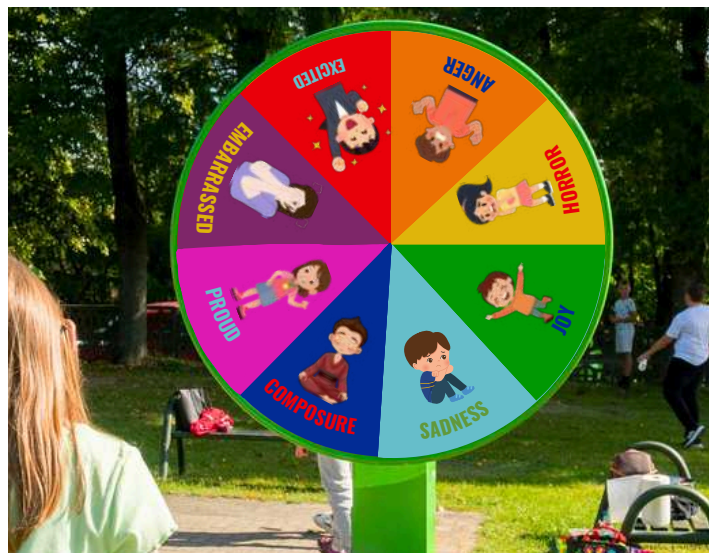


AP-18 WHEEL OF ECOLOGICAL EDUCATION

Spin the wheel and complete the challenge it lands on. Each section shows a task related to ecology — like recycling, saving water, or sorting waste. It’s a fun way to move, learn, and care for the planet. You can also scan the QR code to learn more about the environment.

AP-20 WHEEL OF EMOTION

Spin the wheel to draw an emotion. The child’s task is to show it using their face, body, or voice. This simple activity helps children recognize, name, and express feelings. It’s useful in emotional development, therapy, and everyday play.



AP-19 SPORT & MOVE WHEEL

PREMIERE COMING SOON



PERSONALIZATION OF PATTERNS

Choose from three print personalization options to create an optical circle tailored to your preferences. Each variant offers durable, aesthetic prints that will not only impress with their appearance, but will also withstand everyday use, even in the most demanding weather conditions.



HOW PERSONALIZATION WORKS (3 OPTIONS)

1 BASIC OPTION

You have a ready project, you send graphic files in the appropriate format and extension.

2 STANDARD OPTION

You have the materials. Your project input must include: photos, graphics, and edited content. We will adapt them to the template.

We offer 2 options for corrections.

3 PREMIUM OPTION

You only have an idea - a complete project implemented by our graphic designer. You only provide assumptions or inspiration. Pricing depends on the complexity of the project.

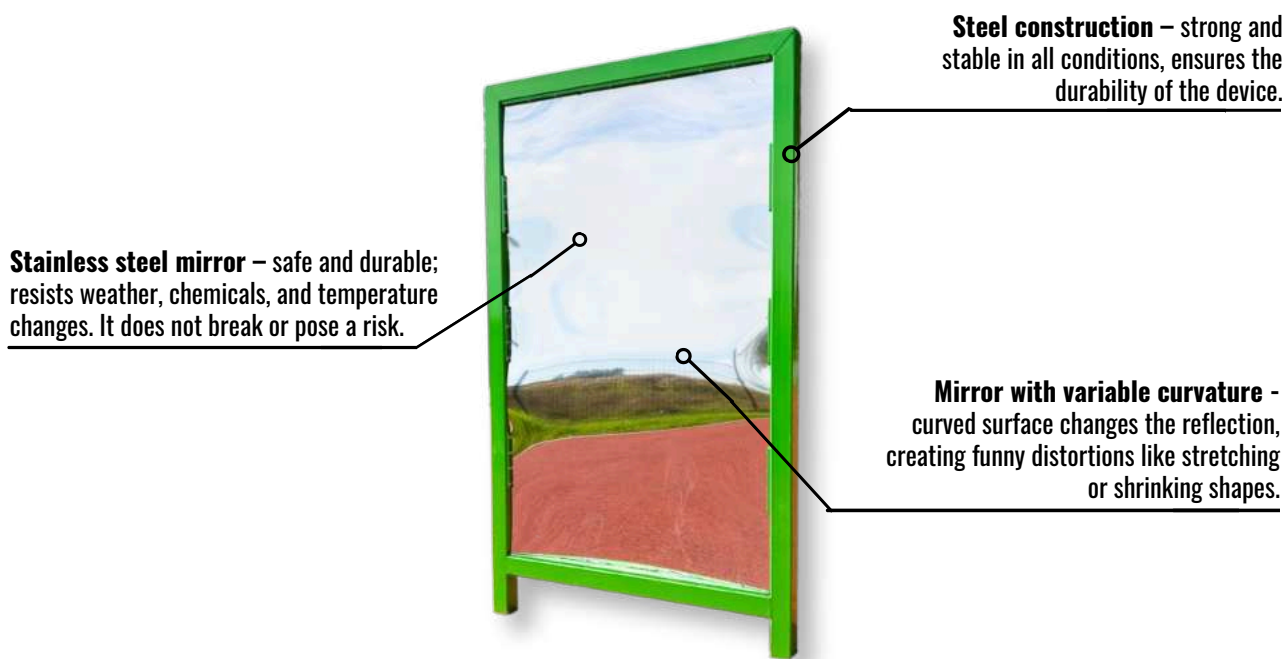
EDUCATIONAL PATH OF ILLUSION



A UNIQUE ATTRACTION

Such devices catch the eye and make a strong impression. Placing several optical wheels together creates an educational path full of illusions. It's a unique feature that makes the space stand out from others.

105 DISTORTING MIRRORS



HOW DOES IT WORK?

Distorting mirrors bend the reflection by using a curved surface.

The shape of the mirror changes how the light bounces, making the image look stretched, shorter, or twisted.

The mirrors are curved on purpose to create different visual effects.

Each type of distortion has a simple scientific explanation.

WHAT IS SPECIAL ABOUT DISTORTING MIRRORS?

- They are fun for both children and adults.
- Looking at a funny version of yourself helps children relax and observe with curiosity.
- These mirrors make science feel playful and invite kids to ask questions.
- They help children see that learning can be surprising and enjoyable.

DIMENSIONS

100 x 6 cm

HEIGHT

175 cm

MATERIAL

Steel structure, mirror - polished stainless steel. Main structural profile: black steel, closed profile 60x60=2

SAFETY ZONE

3,06 x 4 cm

COLOR STANDARD

green (RAL 6018)

PRODUCT COMPLIES WITH PN-EN: 1176-1:2017

YES

RECOMMENDED INSTALLATION

closed area/open area

SAFEGUARD

galvanized construction, powder coated

CATEGORY

KINDERGARTENS, SCHOOLS, HORECA, MEDI





106 SCIENTIFIC HEX



Whose Face Is This - optical mirrors that combine reflections, creating the illusion of one shared body.

Rotating optical wheel – creates the illusion of movement, improving focus and visual perception.



Distorting mirror - bends the reflection to create funny shapes and effects.

Optical illusion panel - shows patterns that play tricks on the eyes and stimulate perception.

HOW DOES IT WORK?

Scientific Hex has several interactive walls with different tasks. Children can choose a wall and explore optical illusions, puzzles, or visual effects.

Each wall offers a new way to play, think, and discover.

This supports learning through fun and hands-on experience.

WHAT IS SPECIAL ABOUT SCIENTIFIC HEX?

- Scientific Hex combines fun and learning in one place.
- Each wall offers different activities that train the brain in a playful way.
- Children improve focus, observation, and problem-solving through visual tasks.
- The device also encourages creativity and curiosity, making it perfect for both play and education.

DIMENSIONS
diameter 217 cm

HEIGHT
260 cm

MATERIAL
Steel structure, mirror - polished stainless steel, prints made on self-adhesive foil - protected with UV-resistant laminate, mechanical elements made of stainless steel, stainless bearings. Main structural profile: black steel, closed profile 80x80=2

COLOR STANDARD
green (RAL 6018)

SAFETY ZONE
5 x 5,2 m

PRODUCT COMPLIES WITH PN-EN: 1176-1:2017
YES

RECOMMENDED INSTALLATION
closed area/open area

SAFEGUARD
galvanized construction, powder coated

CATEGORY
KINDERGARTENS, SCHOOLS, HORECA, MEDI

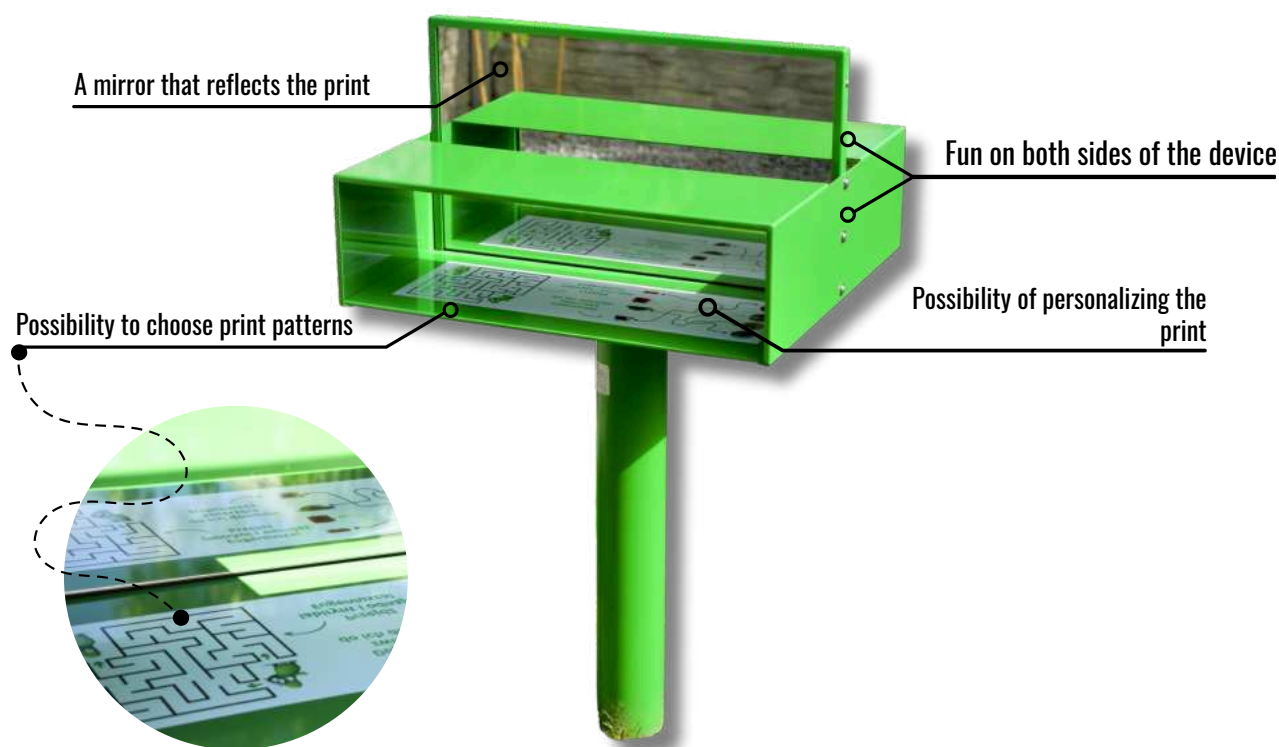






MIRROR WRITING

107 MIRROR WRITING



HOW DOES IT WORK?

Stand in front of the mirror and try to write your name or solve a maze while looking only at your reflection.

The device is double-sided, so two children can play at the same time.

TWO-SIDEDNESS OF MIRROR WRITING

The double-sided nature of Mirror Writing allows multiple children to play at the same time.

On one side you can choose a standard design, and on the other an ecological one promoting pro-ecological values.

Additionally, if you need an individual solution, we offer the possibility of personalization. You can create a project that fully reflects your vision and needs.

DIMENSIONS

65 x 61,5 cm

HEIGHT

116,5 cm

MATERIAL

Steel structure, 5mm thick tempered glass mirror. Main structural profile: black steel.

COLOR STANDARD

green (RAL 6018)

SAFETY ZONE

3,6 x 3,65 m

PRODUCT COMPLIES WITH PN-EN: 1176-1:2017

YES

RECOMMENDED INSTALLATION

closed area/open area

SAFEGUARD

galvanized construction, powder coated

CATEGORY

KINDERGARTENS, SCHOOLS, HORECA, MED



AVAILABLE PRINT DESIGNS

I07-1 STANDARD VERSION



I07-2 ECOLOGICAL VERSION



HOW PERSONALIZATION WORKS (3 OPTIONS)

1 BASIC OPTION

You have a ready project, you send graphic files in the appropriate format and extension.

2 STANDARD OPTION

You have the materials. Your project input must include: photos, graphics, and edited content. We will adapt them to the template. We offer 2 options for corrections.

3 PREMIUM OPTION

You only have an idea - a complete project implemented by our graphic designer. You only provide assumptions or inspiration. Pricing depends on the complexity of the project.

Choose from three personalization options to match the device to your style.

Each version includes strong, good-looking stickers made to last.

They keep their quality even during heavy use and in all weather conditions.



A CHALLENGE FOR PEOPLE OF ALL AGES

CONCENTRATION TRAINING

Writing in a mirror is a great way to train focus — even for adults. It takes effort, because every move must be done in reverse. This task helps improve concentration, precision, and attention to detail. It's a fun and challenging activity that supports brain development.

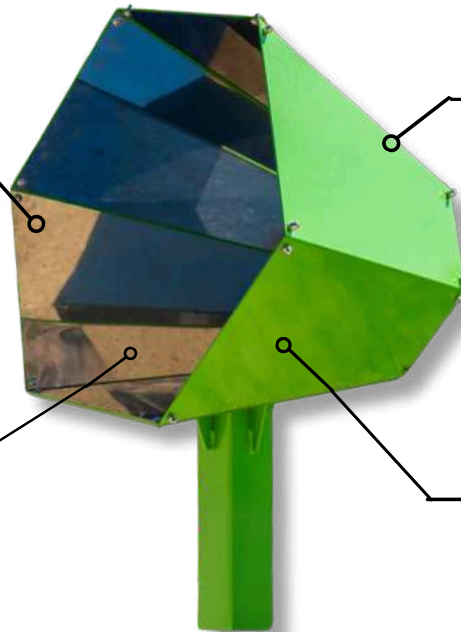
108 KALEIDOSCOPE

Safe stainless steel mirrors – strong and shatterproof, safe to use and long-lasting.

A set of optical mirrors – placed at angles to reflect images many times, creating shapes and symmetry.

Wide viewing hole – lets you easily look inside and enjoy the effect.

Steel casing – durable and weather-resistant, ensures safe use outdoors.



HOW DOES IT WORK?

Put your head inside the kaleidoscope and look around. You'll see many versions of yourself and the world around you.

How is that possible? Inside the device, mirrors are placed at special angles. They reflect light in a way that creates symmetrical patterns and duplicate images. This makes everything inside look magical and multiplied.

WHAT IS SPECIAL ABOUT SCIENTIFIC HEX?

- improves visual perception and awareness,
- sparks imagination and creative thinking,
- supports visual therapy by calming the mind and reducing stress,
- introduces children to the concepts of symmetry, reflection, and optics in a playful way,
- can be used in both educational and recreational settings to combine fun with learning.

DIMENSIONS

80 x 72,5 cm

HEIGHT

153 cm

MATERIAL

steel structure: black steel,
mirrors: polished stainless steel

SAFETY ZONE

3,8 x 3,8 m

COLOR STANDARD

green (RAL 6018)

PRODUCT COMPLIES WITH PN-EN:

1176-1:2017

YES

RECOMMENDED INSTALLATION

closed area/open area

SAFEGUARD

galvanized construction, powder coated

CATEGORY

KINDERGARTENS, SCHOOLS, HORECA, MEDIA





S01

NOT AVAILABLE NOW

ECO-KITCHEN



NEW MODEL IN AUTUMN 2025



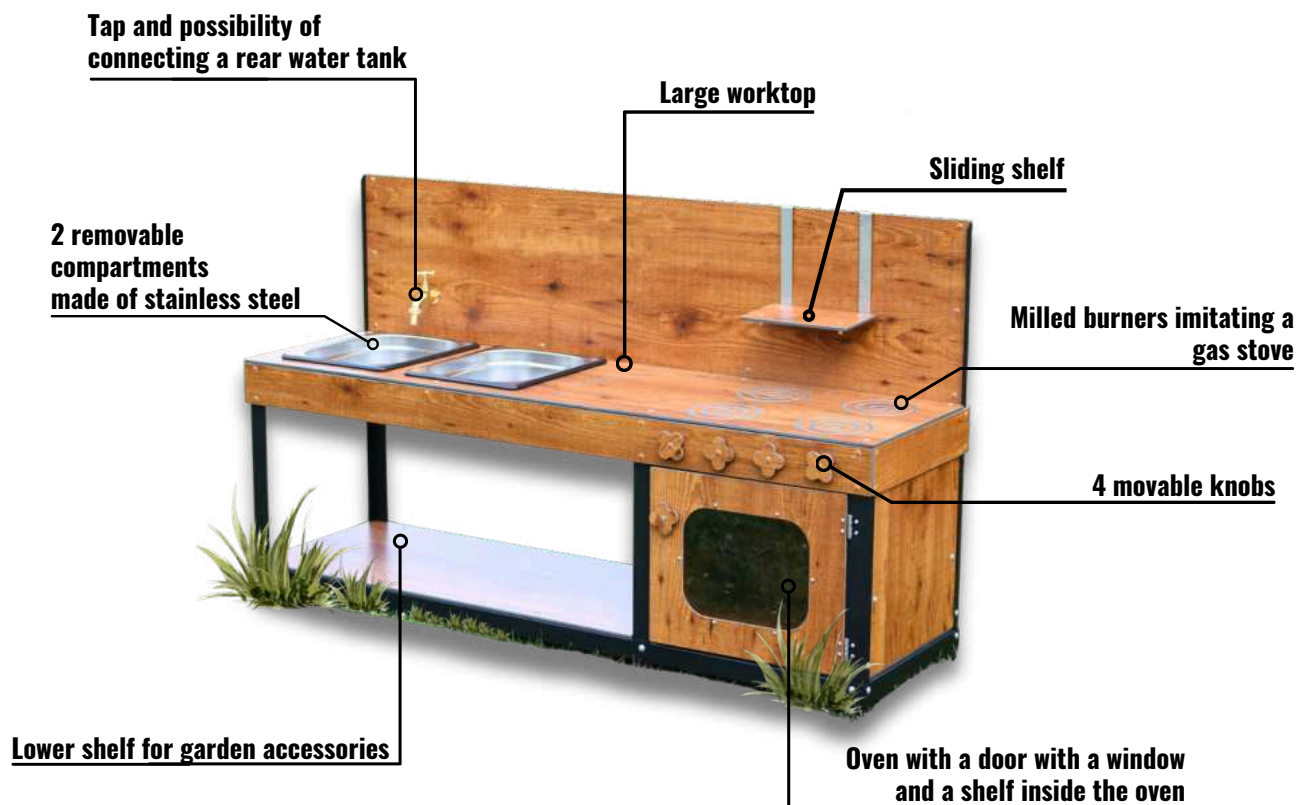
KE01

EU-GENIUS KITCHEN





KE01 EU-GENIUS KITCHEN



CERTIFIED EU-GENIUS KITCHEN

- strengthens immunity,
- makes outdoor activities easier to organize,
- stimulates creativity,
- brings children together in shared play.

Let your children experiment with their senses! Sand, water, mud? In our kitchen, it's possible, without compromising the durability and appearance of the kitchen. Eu-Genius's kitchen attracts like a magnet and received the prestigious Parents' Award in the Toy of the Year competition.

FREE E-BOOK WITH GAME SCENARIOS



DIMENSIONS
139,5 x 41 cm

HEIGHT
85 cm

MATERIAL
Construction – black steel,
4 mm polycarbonate, HPL
board, stainless steel

COLOR STANDARD
wood-like

SAFETY ZONE
4,36 x 3,4 m

PRODUCT COMPLIES WITH PN-EN:
N-1:2017
YES

RECOMMENDED INSTALLATION
closed area/open area


SAFEGUARD
Galvanized steel, powder coated

CATEGORY
KINDERGARTENS, SCHOOLS, HORECA,
MEDI





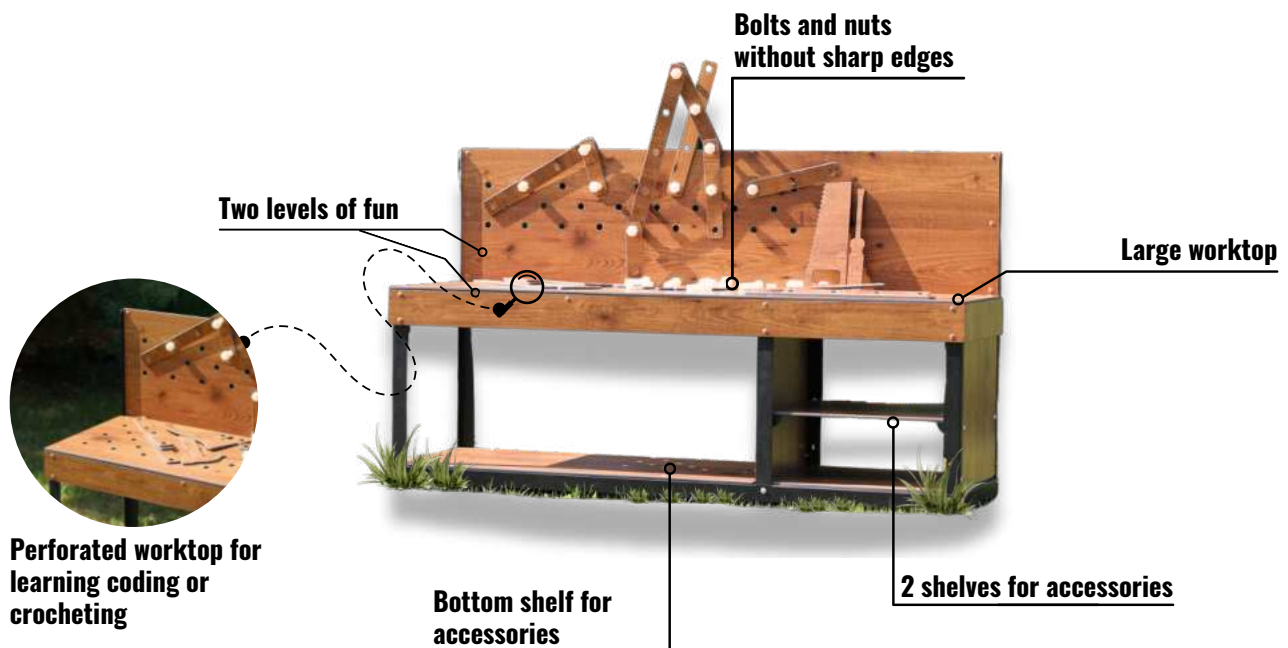
WE01

A close-up photograph of a wooden workshop bench. A child's hands, wearing a green patterned sleeve, are visible on the right side, working with a white plastic bolt and nut. The bench is made of light-colored wood and has several pre-drilled holes. A small wooden shelf is attached to the side of the bench. The background is slightly blurred, showing green foliage.

EU-GENIUS WORKSHOP



WE01 EU-GENIUS WORKSHOP



CERTIFIED EU-GENIUS WORKSHOP

- supports fine motor skills,
- lets children play on two levels,
- integrates many participants at the same time

The Workshop helps children move their fingers, hands, and wrists.

They can twist, screw, and build using safe parts — all while learning and having fun.

It improves coordination and builds hand strength through play.

It's a great tool for therapy and development of small motor skills.

The workshop is certified, easy to clean, and built to last in all weather conditions.

DIMENSIONS
139,5 x 41 cm

HEIGHT
85 cm

MATERIAL
Construction – black steel,
HPL board, stainless steel

COLOR STANDARD
wood-like

SAFETY ZONE
4,36 x 3,4 m

PRODUCT COMPLIES WITH PN-EN: 1176-1:2017
YES

RECOMMENDED INSTALLATION
closed area/open area

SAFEGUARD
Galvanized steel, powder coated

CATEGORY
KINDERGARTENS, SCHOOLS, HORECA, MEDI





S02

MEMORY GAME



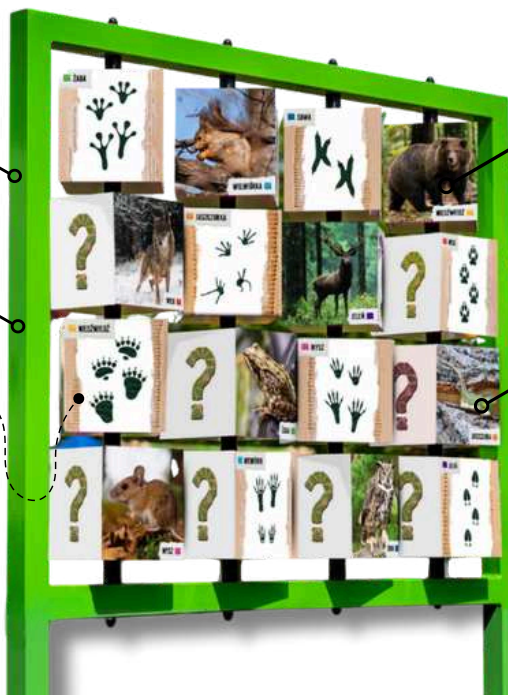
S02 MEMORY GAME

2 device variants: 16 cubes or 24

Each cube has 4 rotating sides with images and facts



Option to personalize cubes (e.g. local history or nature info)



Play up to 4 types of games:
match pairs, puzzles, Q&A,
picture-to-description

**Weather-resistant, durable
prints that won't fade**

This educational game helps children (and adults) improve memory, focus, and knowledge about the world. It's a great part of a scientific playground — learning through play.

TWO SIZES OF THE DEVICE

Choose between 16 or 24 cubes, depending on the space and detail level needed.

16-CUBE VERSION

Great for smaller areas — includes Eco-Memory, Smogo-Memory, and Urban-Memory.

24-CUBE VERSION

Offers more images and content — ideal for Regio-Memory or detailed topics.

DIMENSIONS

16 cube version: 145 x 20 cm
24 cube version: 215 x 20 cm

HEIGHT

16 cube version: 175cm
24 cube version: 175 cm

MATERIAL

Steel structure, plates made of dibond, printing protected with UV-resistant laminate. Main structural profile: black steel, open profile 70 x 45

COLOR STANDARD

green (RAL 6018)

SAFETY ZONE

16 cube version: 3.2 x 4.45 m
24 cube version: 3.2 x 4.45 m

PRODUCT COMPLIES WITH PN-EN:
1176-1:2017
YES

RECOMMENDED INSTALLATION
closed area/open area

SAFEGUARD

Galvanized steel, powder coated

CATEGORY

KINDERGARTENS, SCHOOLS, HORECA, MEDI



AVAILABLE MEMORY GAMES

S02-1 ECO-MEMORY

Eco-Memory helps children learn about plants, animals, and natural phenomena through play.

Using rotating cubes with matching image pairs, it supports visual memory, focus, and concentration.

It's perfect for outdoor learning and building environmental awareness in a fun way.

The graphics can be personalized to include local nature or themes specific to your region.



S02-2 SMOGO-MEMORY

Smogo-Memory is a version of Eco-Memory focused on the topic of air pollution.

It's a great addition to eco-workshops and educational trails.

The rotating cubes include questions, answers, and fun facts that teach children about smog and its impact.

Through play, children gain ecological knowledge and better understand how to care for clean air and the environment around them.



S02-3 MAT-MEMORY



WHAT'S ON EACH SIDE OF THE CUBE?

MATHEMATICAL FORMULAS

Shows geometric shapes with area and perimeter formulas. Helps children understand basic math concepts.

MATH TASKS AND PUZZLES

Includes logic and math problems that train thinking and problem-solving.

ANSWERS TO THE TASKS

Lets children check their answers and learn from mistakes.

FINDING AND COUNTING SHAPES

Shows different figures to find and count — great for focus and observation skills.

A new version of the classic Memory game that focuses on math. It helps develop thinking, focus, and problem-solving through fun math tasks. Like other versions, it uses rotating cubes — each with four sides showing different challenges. It's an engaging way to make learning math more exciting and interactive.



S02-4 BIBLE-MEMORY



ONE BOARD – FOUR WAYS TO PLAY

Bible-Memory has 24 rotating cubes, each with 4 sides offering different learning tasks:

ANIMAL SYMBOLISM IN THE BIBLE

Match the photo to the correct description and meaning of the animal.

SAINTS AND THEIR SYMBOLS

Match parts of artworks to titles or authors. Identify saints by their symbolic items.

CHECK YOUR ANSWERS

Self-correct by comparing with the answer side.

THE GREAT ART PUZZLE

Put together a full image from puzzle pieces across the cubes.

Bible-Memory is a new version of the classic memory game that introduces children to biblical symbols and sacred art. It offers not only fun, but also a chance to learn about saints, their special attributes, and famous Christian artworks. This game connects play with meaningful content, helping children explore religion and culture in an engaging way.



MEMORY GAME PERSONALIZATION

HOW PERSONALIZATION WORKS (3 OPTIONS)

1 BASIC OPTION

You have a ready project, you send graphic files in the appropriate format and extension.

2 STANDARD OPTION

You have the materials. Your project input must include: photos, graphics, and edited content. We will adapt them to the template. We offer 2 options for corrections.

3 PREMIUM OPTION

You only have an idea - a complete project implemented by our graphic designer. You only provide assumptions or inspiration. Pricing depends on the complexity of the project.

Our designer will create a unique, custom pattern for each side of the Memory game. You can choose from three personalization options to make the game match your needs.

There are two versions available:

Small Memory game – with 16 cubes, ideal for smaller spaces

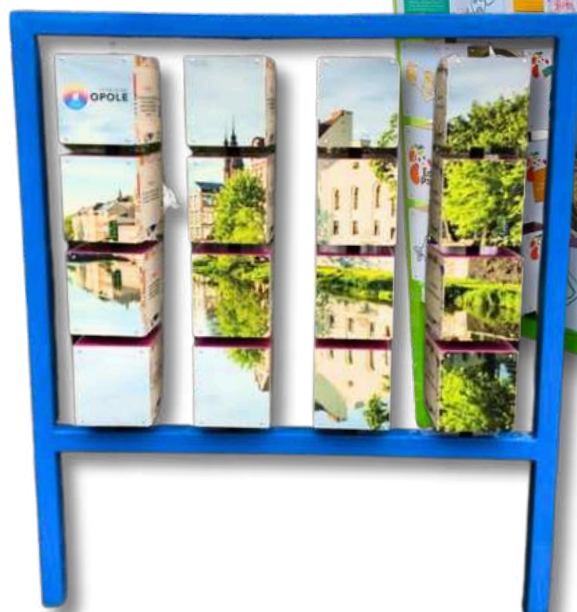
Large Memory game – with 24 cubes, perfect for more detailed content

Choose the version that best fits your space and the amount of information you want to include.

below personalization for the Municipality of Lesko in Poland



4X4 SMALL SIZE



4X6 LARGE SIZE



PRODUCT PRICE + PERSONALIZATION INVESTMENT IN A UNIQUE GRAPHIC DESIGN

MEMORY PERSONALIZATION

S02-PS SMALL SIZE 4X4



EXAMPLE VERSION CREATED FOR A CLIENT FROM FRANCE – THEME: THE UNDERWATER WORLD

S02-PS PERSONALIZED MEMORY SMALL SIZE 4X4

This small Memory game can be fully customized to match your goals.

A great example is Urban-Memory – a version that promotes the city by showing landmarks, culture, and history.

Thanks to its interactive form (up to 4 game types: match pairs, puzzles, Q&A), it engages both children and adults.

It supports education, social connection, and discovery of the local area.

The theme can also be completely different — for example, an underwater world or any topic you choose.

We'll help you create a version that becomes a unique showcase for your idea or location.



PARK CENTER IN OPOLE

S02-PL LARGE SIZE 4X6

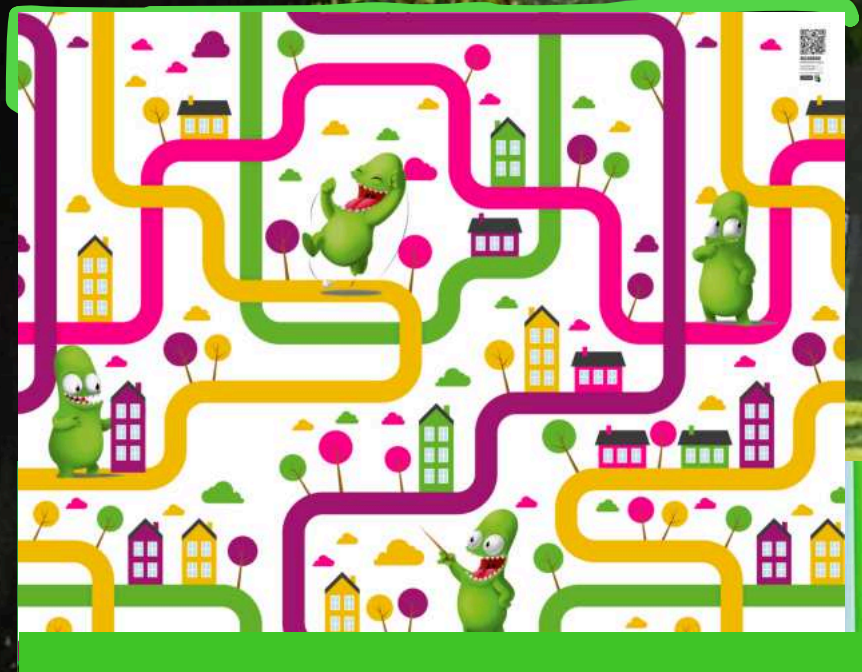


**S02-PS PERSONALIZED MEMORY
LARGE SIZE 4X6**

Personalized version based on customer needs – size: 24 cubes. A great example is Regio-Memory – a larger Memory game designed to show the uniqueness of a region. It's perfect for presenting monuments, traditions, local flavors, or legends. The content can be divided into themes like nature, culture, cuisine, or history. However, just like the smaller version, this format can also be fully customized to match any subject — such as science, ecology, or even the underwater world. With more space for content, it's ideal for outdoor learning, promotion, and exploration. Perfect for parks, promenades, and educational trails, it helps people of all ages engage with your message in a fun and creative way.



S03



MAGNETIC MARBLE RACE TRACK

MAGNETIC MARBLE RACE TRACK

Magnetic board available in 3 design options

Double-sided board allows several children to play at once



Wooden elements with built-in magnets

Tracks vary in length and shape to support logic and coordination

HOW DOES IT WORK?

Build your own race track for the ball using magnetic wooden pieces.

Just attach them to the board and start building!

The magnets hold the elements in place as the ball moves through the track.

It's a creative and engaging activity for one or more children at the same time.

WHAT IS SPECIAL ABOUT THE MAGNETIC MARBLE RACE TRACK?

- develops spatial imagination and planning skills,
- improves hand-eye coordination and manual abilities,
- teaches cause-and-effect through play,
- allows for open-ended, creative construction every time.



DIMENSIONS

200 x 22 cm

HEIGHT

158 cm

MATERIAL

Steel construction, prints made on self-adhesive foil secured with UV-resistant laminate. Main structural profile: black steel, closed profile 60x60-2, movable elements: beech wood

COLOR STANDARD

green (RAL 6018)

SAFETY ZONE

3,22 x 5 m

PRODUCT COMPLIES WITH PN-EN: 1176-1:2017
YES

RECOMMENDED INSTALLATION

closed area/open area

SAFEGUARD

galvanized construction, powder coated, varnished wood

CATEGORY

KINDERGARTENS, SCHOOLS, HORECA, MEDIA



AVAILABLE BOARD DESIGNS



S03-1 MAGNETIC MARBLE RACE TRACK - STANDARD VERSION

Children create marble tracks using magnetic wooden pieces. They learn about gravity, friction, and motion while building freely on colorful printed paths. Set includes marbles and track elements. Can be used on both sides.

*Can be used on both sides.

S03-2 MAGNETIC MARBLE RACE TRACK - ECO VERSION

This version connects physics with ecology. Children design routes that lead to pro-environmental actions. While playing, they learn how movement and nature can work together.



*Can be used on both sides.



S03-3 MAGNETIC MARBLE RACE TRACK - FOREST VERSION

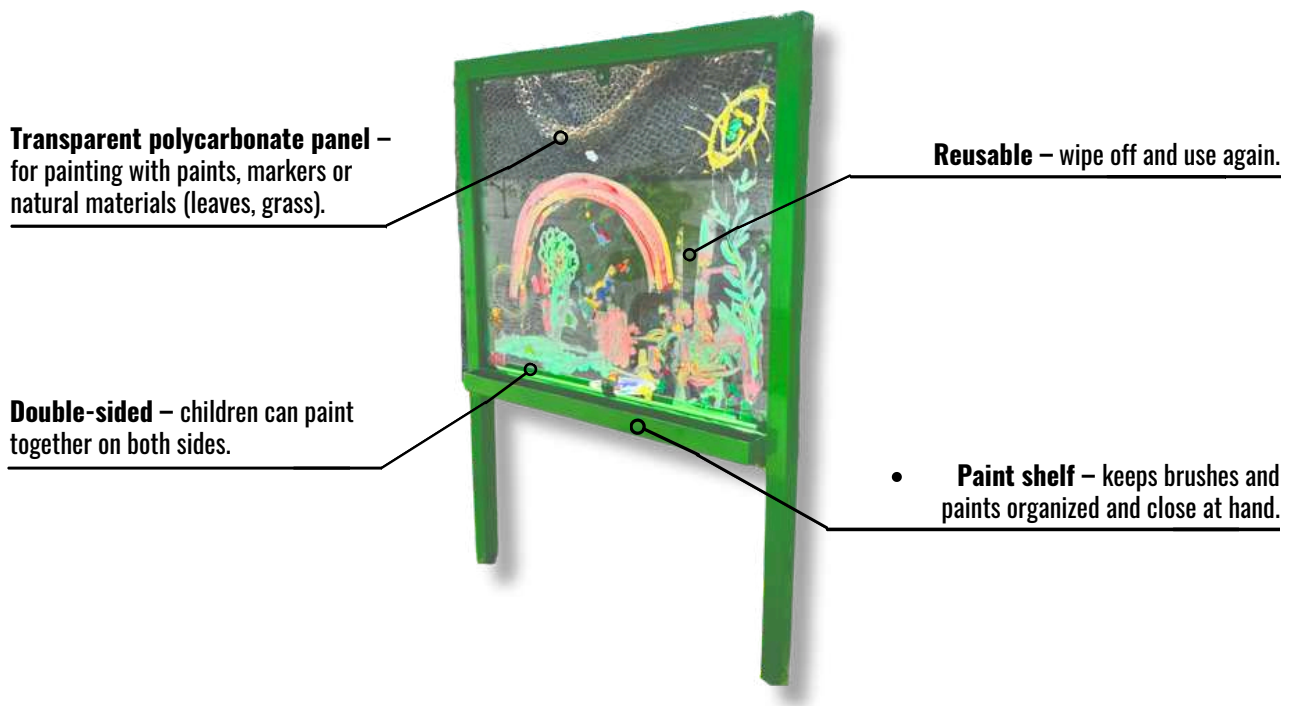
Children explore forest life while learning physics. They guide the marble through tree canopies, underground burrows, and other natural scenes. A fun way to combine nature, motion, and creative thinking.

*Can be used on both sides.

PATTERN: STANDARD



S06 PAINTING WALL



HOW DOES IT WORK?

Take poster paints, water, or whiteboard markers and start painting on the large transparent polycarbonate panel. If you want to create a new image, simply wipe off the old one with a damp cloth and begin again. The wall can be used from both sides, so several children can paint together.

WHAT IS SPECIAL ABOUT THE PAINTING WALL?

- This double-sided painting wall is a year-round, sensory-rich tool that supports creativity, precision, and fine motor skills.
- Its transparent surface encourages children to observe their surroundings and express themselves through art.
- It's also great for group work, building cooperation and social bonds through shared creativity.

DIMENSIONS

145 x 6 cm

HEIGHT

160,5 cm

MATERIAL

Steel structure, transparent polycarbonate. Main structural profile: black steel

SAFETY ZONE

3,20 x 4,25 m

COLOR STANDARD

green (RAL 6018)

PRODUCT COMPLIES WITH PN-EN: 1176-1:2017

yes

RECOMMENDED INSTALLATION

SAFEGUARD

galvanized construction, powder coated

CATEGORY

KINDERGARTENS, SCHOOLS, HORECA, MEDIA





EDUCATIONAL BOARDS-STANDARD



EDUCATIONAL BOARDS (STANDARD)

S07 (ONE SIDED)



S08 (DOUBLE SIDED)



Important - choosing the variant with the race track will change the price

The educational board with the race track includes a set of wooden tracks and balls, which increases the final price of this variant.

HOW DOES IT WORK?

The Educational Board is a practical tool for schools and kindergartens. It helps conduct engaging outdoor lessons using illustrated content. Its durable, double-sided design allows for two different themes, ideal for group learning outside.

DOUBLE-SIDEDNESS OF THE BOARDS

Each side of the Education Board can display a different educational topic. You can choose from ready-made options or design your own, combining themes to suit your program. Mix freely, e.g.

1 CONTINENTS + FIRST AID

2 BALL TRACK + CONTINENTS

3 ECO-HOUSE + FIRST AID

4 YOUR PATTERN + YOUR PATTERN

DIMENSIONS

106 x 5,5 cm

HEIGHT

114 cm

MATERIAL

Steel structure, stainless steel elements, main structural profile: black steel, open profile, prints made on self-adhesive foil secured with UV-resistant laminate

COLOR STANDARD

green (RAL 6018)

SAFETY ZONE

4,1 x 3 m

PRODUCT COMPLIES WITH PN-EN: 1176-1:2017

yes

RECOMMENDED INSTALLATION

closed area/open area

SAFEGUARD

galvanized construction, powder coated,

CATEGORY

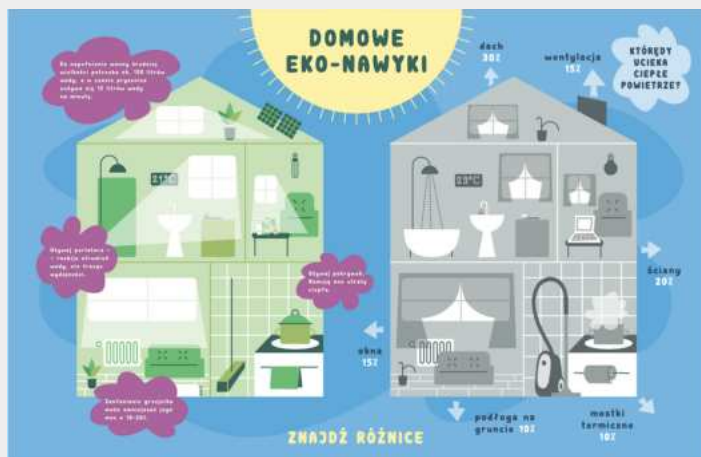
KINDERGARTENS, SCHOOLS, HORECA, MEDIA

www.edyplayground.eu



SELECT EDUCATIONAL BOARDS

MIX AND MATCH - CHOOSE BOARDS FROM EB PATTERNS



EB1 EDUCATIONAL BOARD ECO-HOME

The Eco-Station board teaches children the basics of ecology, waste segregation, and caring for the environment. Through interactive play, it builds ecological awareness and a sense of responsibility for the planet.

www.eduplayground.eu



EB2 EDUCATIONAL BOARD FIRST AID

The board shows what to do in case of an accident — from calling for help to dressing wounds and performing resuscitation. It helps children develop responsibility and readiness to act.

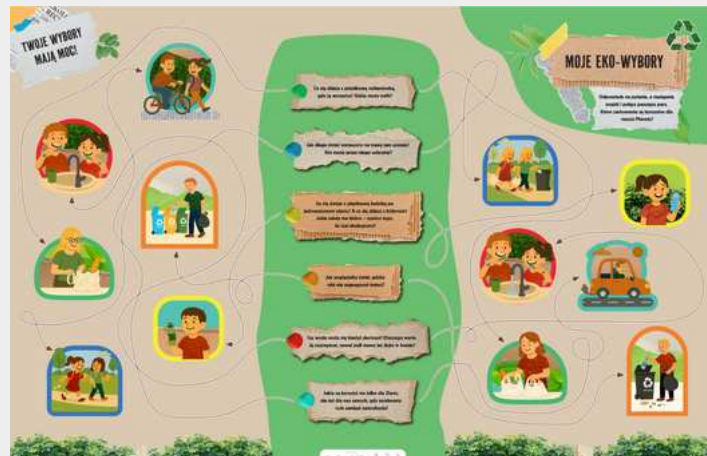


EB3 CONTINENTS EDUCATIONAL BOARD

The continent map sticker is ideal for geography lessons. It helps students explore world regions, countries, and their key characteristics in an engaging way.

EB4 EDUCATIONAL BOARD ECO-CHOICES

Children answer questions about everyday habits and their impact on the environment – from saving water to recycling to choosing transport. Then they match the questions with illustrations of ecological and non-ecological behaviours.



www.eduplayground.eu

EB5 EDUCATIONAL BOARD WHAT WILL COME OF IT

The board shows that waste can gain a second life – becoming functional and creative everyday objects. Children learn about upcycling by matching elements, such as bird feeders from boards or clothes from bottles.



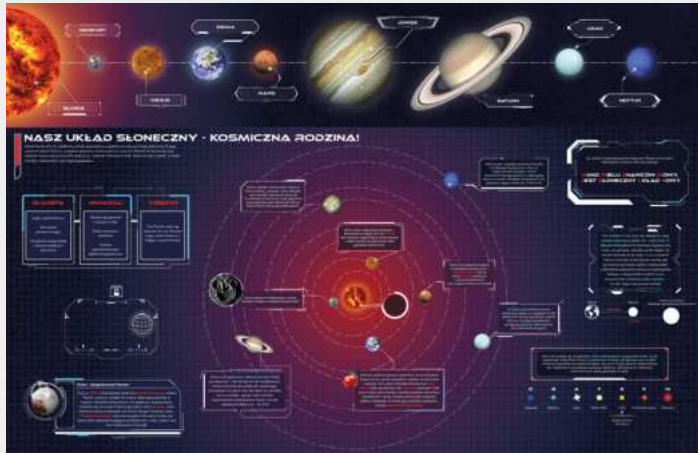
EB6 EDUCATIONAL BOARD LEARNING SEGREGATION

Children learn which container a given waste should go to – paper, glass, bio, plastic, metal, mixed or PSZOK. The task of participants is to match the illustrations of objects to the correct colour of the container.



SELECT EDUCATIONAL BOARDS

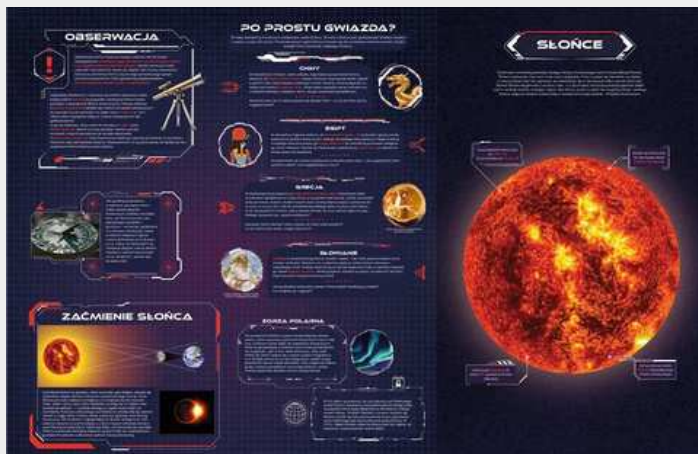
MIX AND MATCH - CHOOSE BOARDS FROM EB PATTERNS



EB7 EDUCATIONAL BOARD SOLAR SYSTEM

This board illustrates the Solar System as a cosmic family. It introduces all the planets and their order from the Sun, explains what makes a planet, a star, or a moon, and provides fun facts about each celestial body.

www.eduplayground.eu



EB8 EDUCATIONAL BOARD ABOUT THE SUN

The Sun board helps to understand how the Sun works and why it is so important to life on Earth. It shows how sunlight travels, explains solar flares and sunspots. It presents interesting facts about ancient solar observation in different cultures.



EB9 MOON EDUCATIONAL BOARD

The Moon board introduces children to fascinating facts about our natural satellite. It shows the phases of the Moon, highlights the differences between the visible and dark side, and explains lunar eclipses.

CREATE YOUR OWN COSMIC CORNER!



**EB10 EDUCATIONAL BOARD HISTORY
OF SPACE DISCOVERIES**

VERSION OF THE BOARD WITH A RACE TRACK

WOODEN TRACKS AND BALLS INCLUDED



EB11 EDUCATIONAL BOARD WITH A RACE TRACK - STANDARD

Children create marble tracks using magnetic wooden pieces. They learn about gravity, friction, and motion while building freely on colorful printed paths. Set includes marbles and track elements. Can be used on both sides.

www.eduplayground.eu



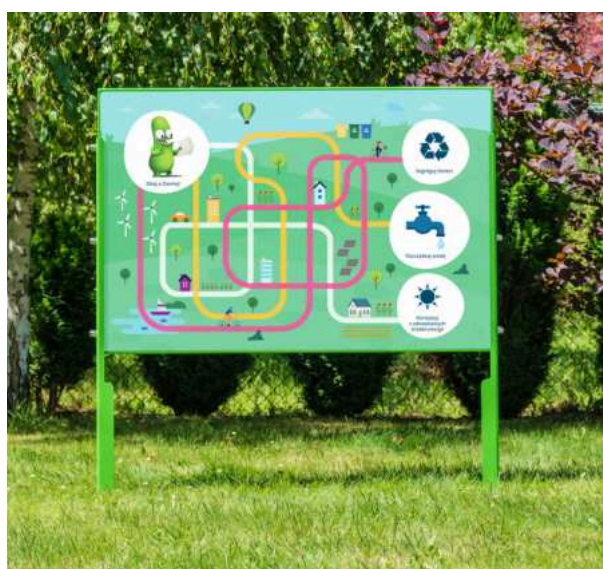
EB12 EDUCATIONAL BOARD WITH A RACE TRACK- ECO

This version connects physics with ecology. Children design routes that lead to pro-environmental actions. While playing, they learn how movement and nature can work together.



EB13 EDUCATIONAL BOARD WITH A RACE TRACK - FOREST LIFE

Children explore forest life while learning physics. They guide the marble through tree canopies, underground burrows, and other natural scenes. A fun way to combine nature, motion, and creative thinking.





HAPTIBOARD



PREMIERE COMING SOON







EDUCATIONAL BOARDS

WITH ROTATING ELEMENTS

EDUCATIONAL BOARDS

Stick any magnets and other materials

Possibility to change the topic of the educational board

Rotating elements



Possibility to buy educational magnets - EDU Box



HOW DOES IT WORK?

Educational boards are a perfect tool for outdoor learning. You can choose a topic that best fits your needs and stick magnets or other materials on the board.

The boards let you run many fun and active lessons outside. Learning through play helps children stay focused and understand things more easily.

ROTATING GAME ELEMENT

The board includes rotating elements, like a clock or a wheel. Children spin them to get tasks or move forward in the game. This simple mechanism supports counting, decision-making, and active participation in learning.

DIMENSIONS

106 x 5,5 cm

HEIGHT

114 cm

MATERIAL

Steel structure, stainless steel elements, main structural profile: black steel, open profile, prints made on self-adhesive foil protected with UV-resistant laminate

COLOR STANDARD

green (RAL 6018)

SAFETY ZONE

4,1 x 3 m

PRODUCT COMPLIES WITH PN-EN: 1176-1:2017

YES

RECOMMENDED INSTALLATION

closed area/open area

SAFEGUARD

galvanized construction, powder coated,

CATEGORY

KINDERGARTENS, SCHOOLS, HORECA, MEDI



S13 EDUCATIONAL BOARD - 4 SEASONS

Children learn about the four seasons – what grows in spring, what ripens in summer, why leaves fall in autumn, and what winter looks like.

The board has moving parts that show how nature, weather, and daily life change during the year. While playing, children turn the hands of the clock by themselves. This helps them learn to tell time and understand what happens during the day.

This fun activity builds a sense of time, logical thinking, and helps children notice how the world changes in a regular, natural way.



www.eduplayground.eu

S12-1 ECOLOGICAL BOARD GAME

Children spin the wheel to see how many steps to take. Then they move around a colorful board, complete tasks, and learn how to care for the environment. Each space is a chance to discover something new – like how to save water and electricity, sort waste, or use renewable energy.

The game turns important knowledge into play and shows that even small everyday choices make a difference.

Thanks to movement, surprise, and clear messages, children learn by doing – and remember that taking care of the planet starts with simple actions.





www.eduplayground.eu

S12-2 THE COSMOS BOARD GAME

Children spin the wheel to see how many steps to take. Then they move along a space-themed board full of planets, stars, and fun facts about the universe.

The game makes learning about space exciting – using movement, emotions, and play to keep children engaged.

While playing, children build logical thinking, learn to work together, and discover facts about the Solar System and space.

It's a fun and inspiring way to learn, move, and explore the universe together.

S12-3 THE “WAY TO HEAVEN” BOARD GAME

Children spin the wheel and move a magnetic pawn across the board. On their way, they land on spaces that either help them move forward or give them a task to do. Each space teaches something important – about good choices, helping others, and Christian values. The game helps children understand morals in a simple and playful way.

EXAMPLE FIELDS ON THE BOARD:

- "A friend needed help and you gave it to him. You're moving 2 squares ahead!"
- "You meet St. Stanislaus Kostka, patron saint of children and youth. He leads you 3 squares ahead!"



S14 EDUCATIONAL BOARD-“PRODUCT LIFE CYCLE”

This board shows how products are made – from raw materials, through use, to disposal or recycling. Children learn that every product has a life cycle that affects people and nature. Clear steps explain where things come from and where they go after we throw them away. The board also shows how to sort waste and how long it takes to decompose – from paper and glass to plastic or chewing gum. It teaches that recycling, smart shopping, and small changes at home help protect the planet. This is a great way to build ecological awareness through facts, colors, and simple tips.

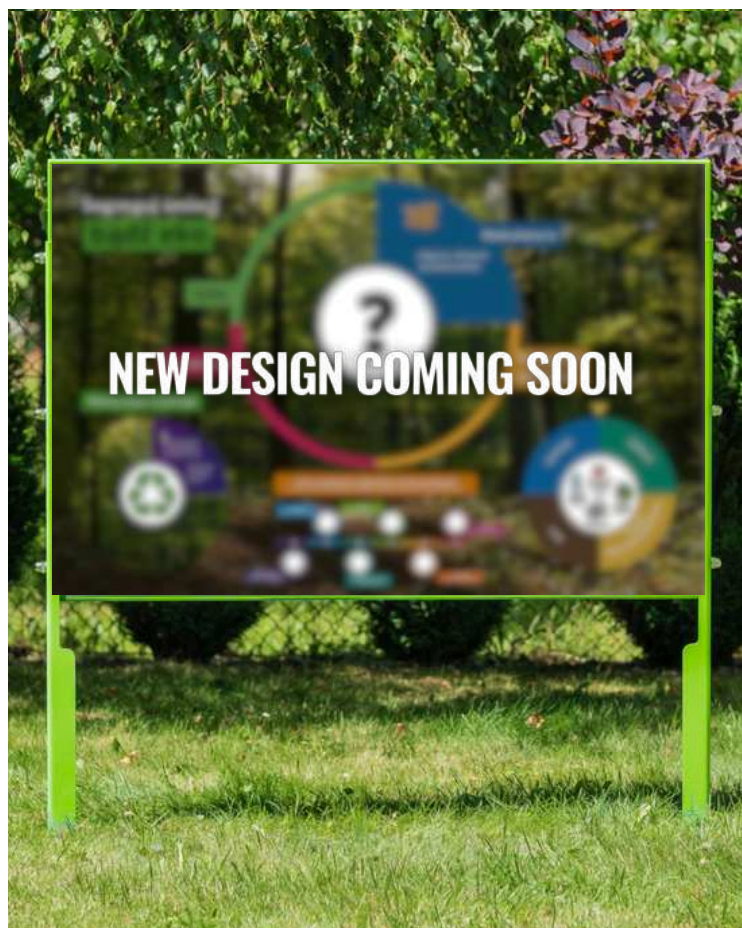


www.eduplayground.eu

S15 EDUCATIONAL BOARD-“SORT YOUR GARBAGE”

Children learn how to sort waste into the right groups – paper, glass, plastic, bio, or aluminum. Colorful pictures and simple symbols help them remember it. Next, they test their knowledge by spinning the wheel. It shows a category, like “glass,” and they must match the correct waste. It’s a fun way to practice thinking and learn why recycling is important.

The board also shows how long waste takes to decompose – from weeks to even 1,000 years – helping children understand how their choices affect the planet.





PERSONALIZATION OF BOARDS



HOW PERSONALIZATION WORKS (3 OPTIONS)

1 BASIC OPTION

You have a ready project, you send graphic files in the appropriate format and extension.

2 STANDARD OPTION

You have the materials. Your project input must include: photos, graphics, and edited content. We will adapt them to the template. We offer 2 options for corrections.

3 PREMIUM OPTION

You only have an idea - a complete project implemented by our graphic designer. You only provide assumptions or inspiration. Pricing depends on the complexity of the project.

Choose from three board personalization options to create one that suits your needs. Each version includes durable, eye-catching stickers that look great and hold up to daily use in all weather conditions.





S09 PYTHAGORAS EDUCATIONAL BOARD

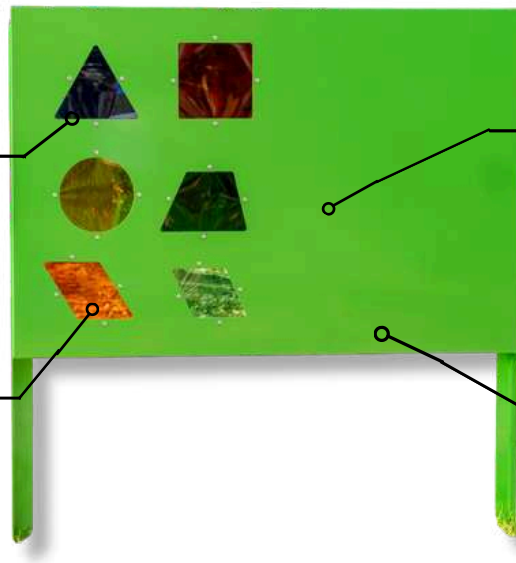
Safe materials – durable plexiglass panes reduce the risk of breakage.

Coloured plexiglass – teach colour recognition and transform surroundings.

Magnet use – children can attach tasks to the metal part of the board using various thematic magnet sets.



Steel construction – strong and weather-resistant.



HOW DOES IT WORK?

Children can explore the board in many engaging ways. They can look through the colorful plexiglass panels to see how the world changes in different shades. They can attach magnetic elements, such as puzzles or learning tasks, and match them to the correct spots

WHAT IS SPECIAL ABOUT PHYTAGORAS EDUCATIONAL BOARD?

- Combines sensory exploration with learning through colors and shapes
- Supports development of spatial imagination and shape recognition
- Allows for interactive magnetic play using educational sets
- Encourages teamwork and creative play among children
- Perfect tool for outdoor educational activities in schools and kindergartens

DIMENSIONS

106 x 5,5 cm

HEIGHT

114 cm

MATERIAL

steel structure, colored plexiglass. Main structural profile: black steel

SAFETY ZONE

4,1 x 3 m

COLOR STANDARD

green (RAL 6018)

PRODUCT COMPLIES WITH PN-EN: 1176-1:2017

YES

RECOMMENDED INSTALLATION

closed area/open area

SAFEGUARD

galvanized construction, powder coated

CATEGORY

KINDERGARTENS, SCHOOLS, HORECA, MEDI





S10 DA VINCI EDUCATIONAL BOARD

Possibility of using magnets – children can attach tasks to the metal part of the board using various thematic magnet sets.



Transparent polycarbonate window – perfect for painting or experimenting with natural materials like leaves or grass.

Reusable surface – easy to clean with a cloth; ready for endless play.

HOW DOES IT WORK?

Children can draw or paint on the transparent window using dry-erase markers or paints. They can also use grass or leaves to make natural prints. When finished, they can clean the surface with a cloth and start again. The steel part of the board allows them to attach magnetic tasks.

WHAT IS SPECIAL ABOUT DA VINCI EDUCATIONAL BOARD?

- Encourages teamwork – children can outline each other's silhouettes and decorate them.
- Supports learning through touch – by attaching magnetic shapes, letters or numbers.
- Stimulates creativity by combining painting, movement and observation.
- Painting with fingers or natural materials supports fine motor skills and creativity.
- Offers open-ended play – the board adapts to the child's imagination, encouraging free exploration and experimentation.

DIMENSIONS

106 x 5,5 cm

HEIGHT

114 cm

MATERIAL

Steel structure, transparent polycarbonate. Main structural profile: black steel

SAFETY ZONE

4,1 x 3 m

COLOR STANDARD

green (RAL 6018)

PRODUCT COMPLIES WITH PN-EN: 1176-1:2017

YES

RECOMMENDED INSTALLATION

closed area/open area

SAFEGUARD

galvanized construction, powder coated

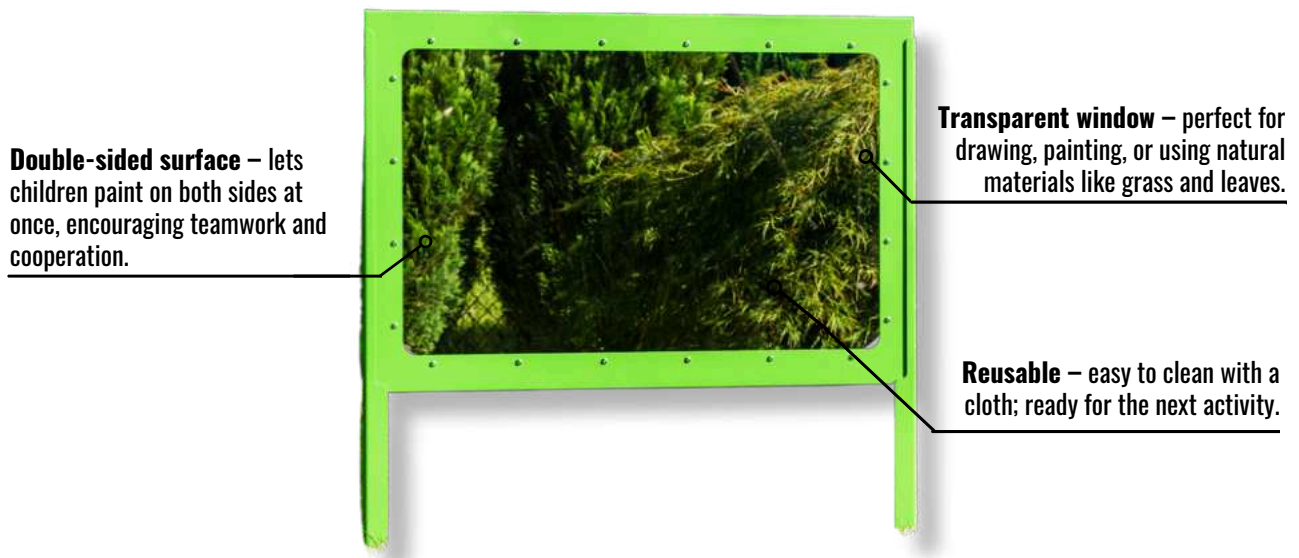
CATEGORY

KINDERGARTENS, SCHOOLS, HORECA, MEDI





S11 PICASSO EDUCATIONAL BOARD



HOW DOES IT WORK?

Children can paint, draw, or attach educational cards and coloring pages to the transparent board. They can also use markers or natural materials like leaves to create fun and creative works. It's easy to clean and ready for new ideas anytime.

WHAT IS SPECIAL ABOUT PICASSO EDUCATIONAL BOARD?

- Encourages creativity through painting and drawing.
- It's a great sensory tool that helps improve fine motor skills, hand-eye coordination, and concentration.
- Supports concentration and sensory development.
- The board is often used in art therapy to help children express emotions and build self-confidence in a safe, creative way.
- Turns any space into a fun learning zone.

DIMENSIONS

106 x 5,5 cm

HEIGHT

114 cm

MATERIAL

Steel structure, transparent polycarbonate. Main structural profile: black steel, open profile

SAFETY ZONE

4,1 x 3 m

COLOR STANDARD

green (RAL 6018)

PRODUCT COMPLIES WITH PN-EN:

1176-1:2017

YES

RECOMMENDED INSTALLATION

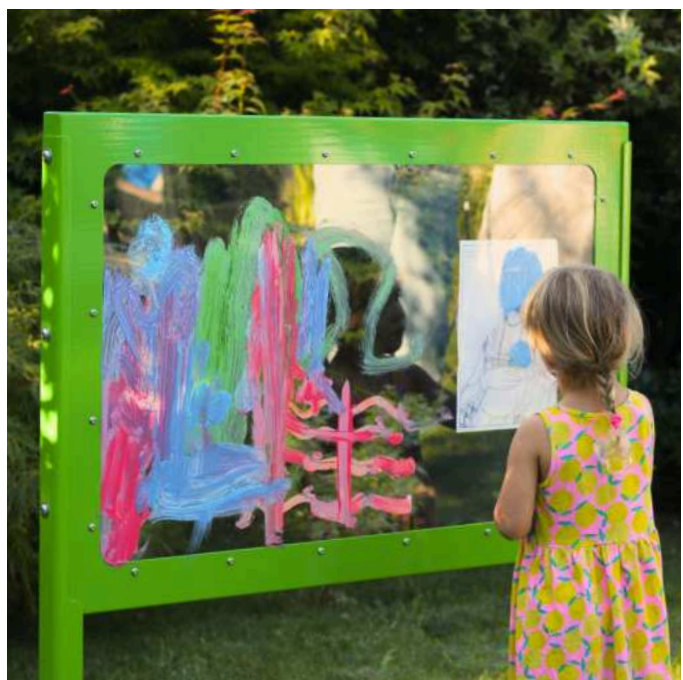
closed area/open area

SAFEGUARD

galvanized construction, powder coated

CATEGORY

KINDERGARTENS, SCHOOLS, HORECA, MEDI





EDU-BOX EDUCATIONAL MAGNETS

USE ALONE OR WITH EDUCATIONAL BOARDS

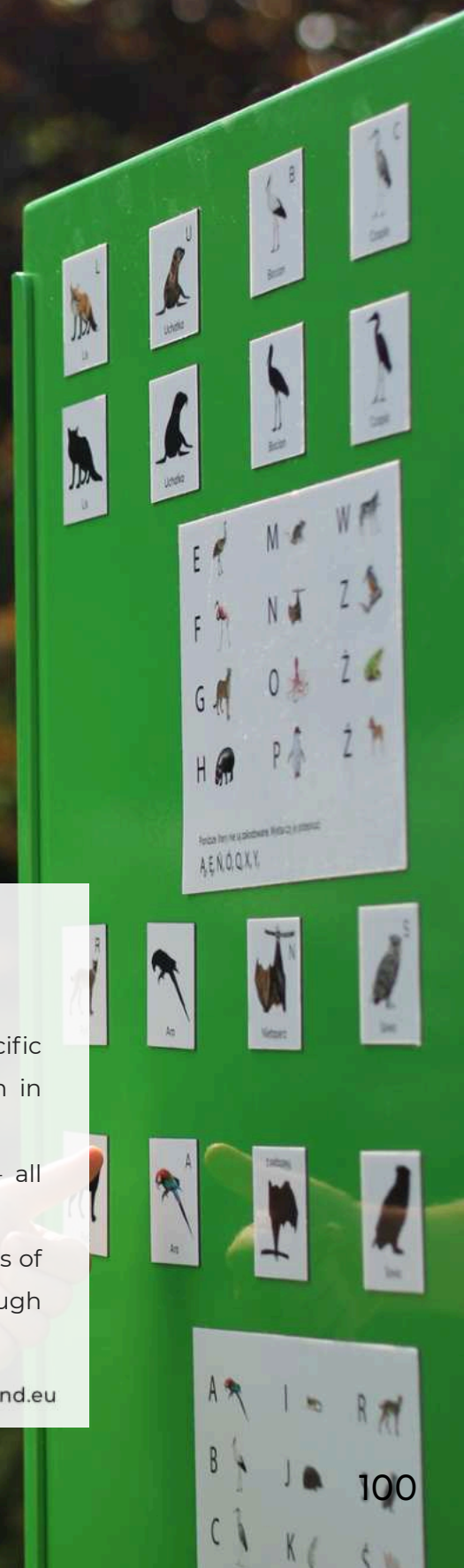
WHAT IS EDU-BOX?

This is a set of thematic magnets. Each set matches a specific educational board, but you can also mix them and use them in different ways.

There are many different EDU-box themes to choose from – all based on games, tasks, and real-life content.

The magnets support the school curriculum and follow the ideas of Maria Montessori, such as realistic images and learning through self-correction.

www.eduplayground.eu



Edu-boxes matching the Continents Educational Board

They introduce children to the subject of continents, teaching them through play to recognize animals, flags, tracks, landmarks and cultural differences. Thanks to attractive photographs and a well-thought-out form, children easily absorb new information.



BOX_08

Learning to segregate

Teaches children how to separate waste by matching waste to appropriate containers.



BOX_05

Eco-friendly choice

Children learn how to choose ecological solutions in different situations.



BOX_13

Basic classification of animals

It divides animals into 5 basic classes: amphibians, reptiles, mammals, fish and birds.



BOX_17

Let's get to know the European Union

It allows children to discover the 27 countries of the European Union and their characteristic places.



BOX_23

Animal alphabet

It helps children recognize animals, teaches the alphabet and introduces them to the world of coding.



BOX_18

Central Europe

Children will learn about the flags of Central Europe countries, which they will create by connecting two appropriate puzzle magnets.



BOX_11

From detail to general

Allows children to match photos of animals with their tracks and characteristics.



BOX_10

Pictures from the continents

Teaches about the continents by selecting photographs that illustrate their diversity.



Works on any magnetic surface

The magnets work not only on the dedicated board, but also on whiteboards, stands, or other magnetic surfaces.

Edu-boxes matching the First Aid Educational Board

Each of them is a specific issue – from the contents of a first aid kit, through recognizing emotions and facial expressions, to calling the emergency services. Thanks to realistic photos and an interactive form, children learn through play.



BOX_09

Dangerous situations

Helps children understand the course of an accident and teaches them what to do in an emergency.



BOX_01

Shadow of danger

Teaches children how to respond to accidents by matching scenes to shadows.



BOX_07

My First Aid Kit

Children learn about the contents of the first aid kit and the use of items thanks to authentic photos.



BOX_20

Hidden emotions

Teaches children the importance of facial expressions, emotions and the impact of small changes in facial expression.



BOX_12

Match the Emotions

Helps children recognize emotions and recognize that everyone may express them differently.



BOX_21

Attention! Accident!

Children learn how and when to report accidents to emergency services.



BOX_15

Broken Bones

Teaches children the names of bones and the location of fractures on the skeleton through engaging play.



Works on any magnetic surface

The magnets work not only on the dedicated board, but also on whiteboards, stands, or other magnetic surfaces.

Edu-boxes matching the 4 Seasons Educational Board

Each one covers a specific topic—from the life cycle and seasonal changes, through weather phenomena and natural disasters. Thanks to realistic images and an interactive format, children learn through play, developing their natural knowledge and logical thinking.



BOX_03

Life Cycle

Children explore the life cycle of a bean, a butterfly, and a human, learning about cause and effect.



BOX_02

Everyday life tasks

It helps children understand their daily schedule and teaches them that routines can look different for everyone.



BOX_14

Weather

Helps children recognize weather phenomena and assign them to seasons.



BOX_06

Natural disasters

Children connect natural disasters with their impacts, learning about threats to the planet.



BOX_16

Seasons

Children learn about the changes that occur throughout the year by assigning photos to the appropriate seasons.



BOX_19

The season of...

Teaches children the names, seasonality and grouping of vegetables and fruits into different categories.



BOX_22

Herbs in the kitchen

Children match herbs to their fragments, practicing observation and concentration.



BOX_04

Fruit trees

Children connect trees with fruits, learning to recognize them by their flowers.



Works on any magnetic surface

The magnets work not only on the dedicated board, but also on whiteboards, stands, or other magnetic surfaces.

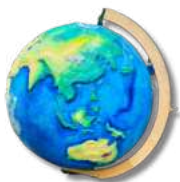
PICK FAVOURITE

SCIENTIFIC DEVICES

**L01
L02**
TELESCOPE



G90
GLOBE



N03
ANIMATED MOVIE



N04
CHINESE WHISPERS



N05
NEWTON'S CRADLE



N06
COMPASS



SCIENTIFIC DEVICES

N07
PERISCOPE



N14
SUNDIAL



N18
PERIODIC TABLE

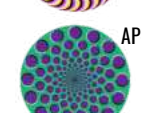
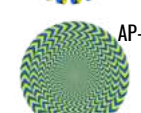
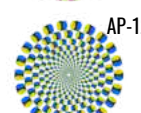
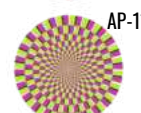
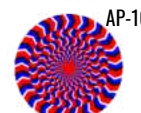


OPTICAL DEVICES

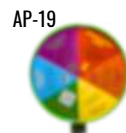
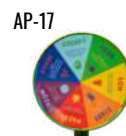
I02
WHOSE FACE IS THIS



I03
OPTICAL WHEEL



OPTICAL DEVICES



I05
DISTORTING MIRRORS



I06
SCIENTIFIC HEX



I07
MIRROR WRITING



I08
KALEIDOSCOPE



SENSORY DEVICES



KE01
EU-GENIUS KITCHEN



WE01
EU-GENIUS WORKSHOP



S04
SENSORY PANEL S04



S06
PAINTING WALL

MEMORY GAME



S02-1
ECO-MEMORY



S02-2
SMOGO-MEMORY



S02-3
MAT-MEMORY



S02-4
BIBLE-MEMORY

MAGNETIC MARBLE RACE TRACK



S03-1
MAGNETIC MARBLE RACE TRACK
STANDARD



S03-2
MAGNETIC MARBLE RACE TRACK
ECO



S03-3
MAGNETIC MARBLE RACE TRACK
FOREST LIFE

PERSONALIZATION



S02-PS
PERSONALIZATION SMALL 4X4



S02-PL
PERSONALIZATION LARGE 6X6

EDUCATIONAL BOARDS

S09

EDUCATIONAL BOARD PYTHAGORAS



S10

DA VINCI EDUCATIONAL BOARD



S11

EDUCATIONAL BOARD PICASSO



EDUCATIONAL BOARDS (WITH ROTATING ELEMENTS)



S12-1 EDUCATIONAL BOARD WITH ECOLOGICAL BOARD GAME



S12-2 EDUCATIONAL BOARD WITH THE BOARD GAME COSMOS



S12-3 EDUCATIONAL BOARD WITH BOARD GAME "THE ROAD TO HEAVEN"



S13 EDUCATIONAL BOARD "4 SEASONS"



S14 EDUCATIONAL BOARD "PRODUCT LIFE CYCLE"

EDUCATIONAL BOARDS (STANDARD)



EB1 EDUCATIONAL BOARD ECO-HOUSE



EB2 EDUCATIONAL BOARD FIRST AID



EB3 EDUCATIONAL BOARD CONTINENTS



EB4 EDUCATIONAL BOARD ECO ELECTIONS



EB5 EDUCATIONAL BOARD WHAT WILL COME OF THIS



EB6 EDUCATIONAL BOARD ECOLOGICAL CHOICE

EDUCATIONAL BOARDS (STANDARD)



EB7 EDUCATIONAL BOARD SOLAR SYSTEM



EB8 EDUCATIONAL BOARD ABOUT THE SUN



EB9 EDUCATIONAL BOARD ABOUT THE MOON



EB10 EDUCATIONAL BOARD HISTORY OF SPACE DISCOVERIES



EB11 EDUCATIONAL BOARD WITH A RACE TRACK - STANDARD



EB12 EDUCATIONAL BOARD WITH A RACE TRACK - ECO



EB13 EDUCATIONAL BOARD WITH A RACE TRACK - FOREST LIFE

COLOR PALETTE

STANDARD:

RAL 6018

RAL 4006
Traffic purple

OTHER COLORS IN THE PALETTE:

RAL 6020
Chrome Green

RAL 6021
Pale Green

RAL 5010
Gentian blue

RAL 5015
Sky blue

RAL 5005
Signal blue

RAL 1021
Colza Yellow

RAL 2003
Pastel Orange

RAL 3020
Traffic red

RAL 9006
White Aluminium

RAL 7012
Basalt Grey

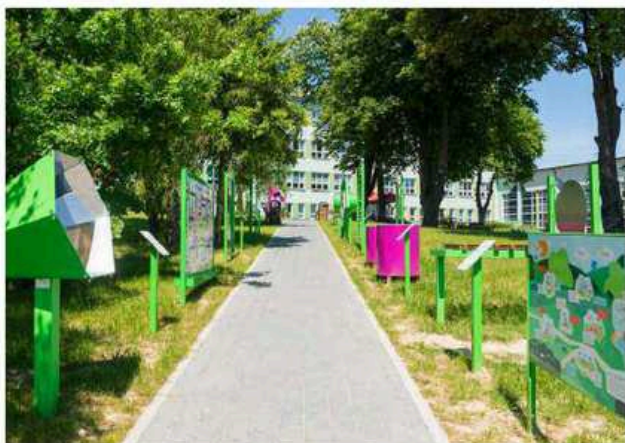
Possibility to order devices in other RAL colours outside the catalogue palette.

⚠ Order processing time may be extended.



OUTDOOR. EDUCATION. FUN.
EDU PLAYGROUND
Inclusivity is our standard

EXAMPLES OF IMPLEMENTATION:



SP im. Stanisława Młodożeńca w Wilczycach



Ścieżka Edukacyjna w Strawczynie



gmina Nowiny, Zgórsko



Gabinet terapeutyczny Leśna Ścieżka - Bielsko-Biała



ZSP nr 1 w Gilowicach



Eko pracownia "Pod Chmurką" przy SP im. Marii Konopnickiej w Opatowie



ZSP nr 3 - Dąbrowa Górnicza



Przedszkole Integracyjne Norlandia w Kętach





DO YOU HAVE ANY QUESTIONS?

Write to us: office@eduplayground.eu
or call us: +48 512 450 033